

802 788 Arthur Erickson Place, West Vancouver

\$4,199,900



Presenting the Penthouse at Evelyn's Forest Edge, by the award winning Onni Group. West Vancouver's ultimate in luxury and discerning living. This South facing dream home is open-plan living at its best; over 2,000 sqft with 3 bedrooms, a huge den, and the best patio in West Vancouver! Gorgeous wide plank oak hardwood flooring flows throughout the Penthouse, and the kitchen features a Sub-Zero fridge and a Miele gas cooktop. The master bedroom offers a luxurious en-suite with marble counter tops and a walk-in closet. Additional interior features include air conditioning a full size washer/dryer, Savant Home Tech system, automated lighting and sound control with built-in speakers, secure parking and more.

KEY INFORMATION

MLS® R2636542

Residential Attached

Park Royal

3 Bedrooms

3 Bathrooms

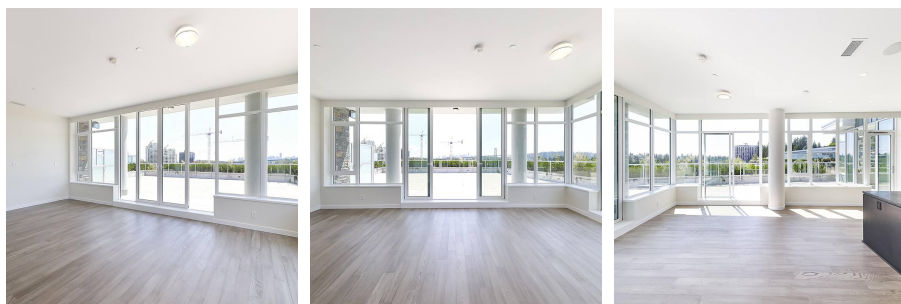
2,067 SF

\$1,328.80 Maintenance Fees

FEATURES

Year Built: 2019

Listed By: Engel & Volkers Vancouver



rennie