

14698 106 Avenue, Surrey

\$2,400,000



Zoned for multi-family Site, nice beautiful house for living and good for investment property, close to Guildford Mall Rec Center, Shopping Center, Bus, Both level of Schools, Super store and Parks, easy access to # 1 Hwy, Port Man Bridge, close to all amenities. This beautiful house situate on 12,110 sqft lot.

KEY INFORMATION

MLS® R2634900

Residential Detached

Guildford

5 Bedrooms

3 Bathrooms

2,305 SF

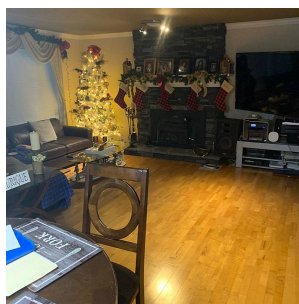
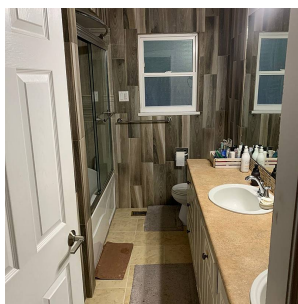
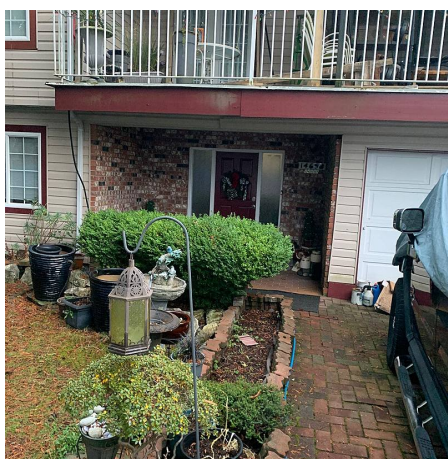
12,110 SF Lot

FEATURES

Year Built: 1973

Views: CITY VIEW

Listed By: Coldwell Banker Universe Realty



rennie