

# 4620 Marine Drive, Burnaby

\$1,880,000



Newly renovated 6 bedroom house with 4 bedrooms upstairs, plus a 2 bedroom suite downstairs with separate entrance and laundry! This beautiful house is on a 1/3 acre lot under R2 Zoning (60 x 177) located on the edge of the Burnaby South Slope, backing onto the greenbelt. Situated in a central location close to Market Crossing and Metrotown, minutes away from schools, golf course, river park. functional floorplan with open concept kitchen features brand new stainless steel appliances, oversized island, quartz countertops. Upstairs has real hardwood and large tiles. Living room and kitchen have ample natural lights and newly installed LED ceiling lights. Double balconies too! Book an appointment to see this tastefully renovated house!

## KEY INFORMATION

MLS® R2636817

Residential Detached

Big Bend

6 Bedrooms

3 Bathrooms

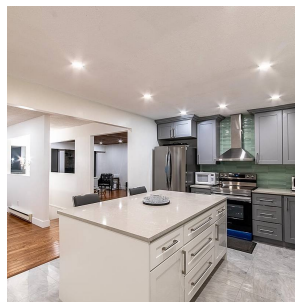
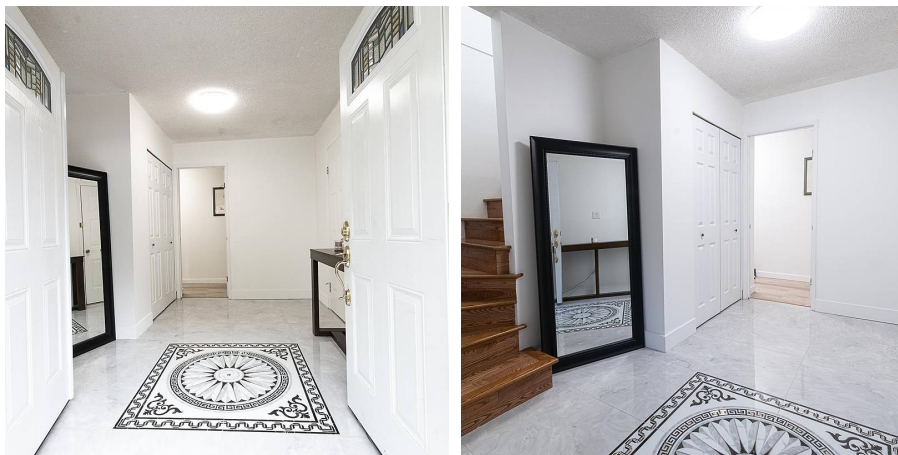
2,716 SF

10,678 SF Lot

## FEATURES

Year Built: 1979

Listed By: Royal Pacific Tri-Cities Realty



rennie