

# 110 43201 Lougheed Highway, Mission

\$297,000



Beautiful rural setting close to Sasquatch Ski Hill, Sandpiper Gold Course, Lake Errock, Kilby, Fishing and nature, well run park only 20 minutes to Mission or Harrison Hot springs. This very well maintained home has open concept layout with plenty of kitchen cabinets, large living room, 2 bedrooms with potential for more. Huge covered deck out to beautiful over 6000 sq. ft. private fenced rear yard. Could create access to rear laneway to create a very large area for extras. Roof about 6yrs. old, newer floors, blinds, lighting, vanity, all electrical outlets. This mobile really feel like a comfy home on a city lot with total privacy. Sits high above lougheed, so no flood issues. 370 PAD rent. Boat/RV parking available .

## KEY INFORMATION

MLS® R2636949

Residential Detached

Lake Errock

2 Bedrooms

1 Bathroom

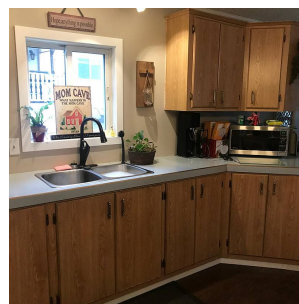
920 SF

## FEATURES

Year Built: 1991

Views: MOUNTAINS

Listed By: Homelife Advantage Realty (Central Valley) Ltd.



rennie