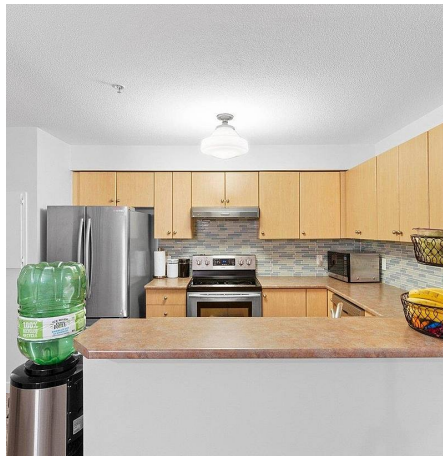
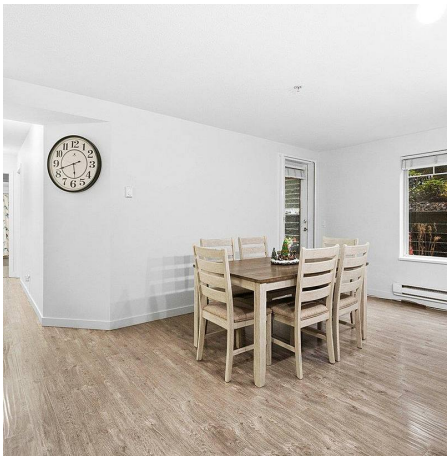


# 2117 244 Sherbrooke Street, New Westminster

\$639,880



LARGE 2 BED 2 BATH HOME AVAILABLE IN THE DESIRABLE SAPPERTON BREWERY DISTRICT! WALK TO THE ROYAL COLUMBIAN HOSPITAL IN UNDER 2 MINUTES AND SKY TRAIN IN 5, COFFEE SHOPS, BROWNS SOCIAL HOUSE, SAVE ON FOODS ALL WITHIN A 2 OR 3 MINUTE WALK. THIS LOCATION HAS EASY ACCESS TO THE HWY AS WELL AS A SHORT SKYTRAIN RIDE TO LOUGHEED MALL. THE OVER 1100 SQ FT PROVIDES MORE THAN ENOUGH ROOM FOR A GROWING FAMILY AS WELL AS A LARGE PATIO FOR YOUR BBQ GATHERINGS ALONGSIDE OF A SMALL YARD FOR A VEGGIE GARDEN. THIS CONDO HAS A GOOD SIZE KITCHEN WITH STAINLESS STEEL APPLIANCES, A BREAKFAST BAR. PETS AND RENTALS ALLOWED (WITH SOME RESTRICTIONS). THIS HOME IS VERY WELL MAINTAINED AND IS READY TO MOVE IN! CALL TODAY FOR FURTHER DETAILS. \*\*\*\*\*OPEN HOUSE Sunday 19th of December from 2 to 4:00 pm\*\*\*\*\*



## KEY INFORMATION

MLS® R2637090

Residential Attached

Sapperton

2 Bedrooms

2 Bathrooms

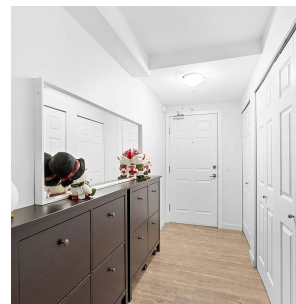
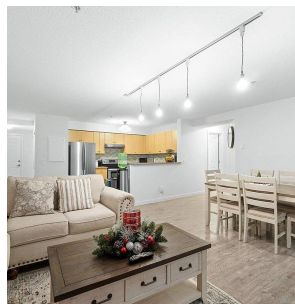
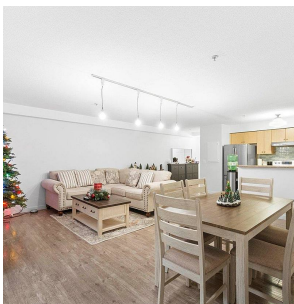
1,163 SF

\$477.00 Maintenance Fees

## FEATURES

Year Built: 2008

Listed By: Vanak Realty



rennie