

1306 6331 Buswell Street, Richmond

\$1,238,000



The Perla is a quality concrete building located in the heart of downtown Richmond. The well-maintained 1541 sqft unit is in the Southeast corner, contains 3 bedrooms/3 bathrooms, and comes with 2 parking spots (side by side). One of the best managed buildings in Richmond, The Perla is steps away from hundreds of stores, restaurants, banks, Richmond-Brighouse skytrain station, and is walking distance to Minoru Park. All showings by appointment only.

KEY INFORMATION

MLS® R2636969

Residential Attached

Brighouse

3 Bedrooms

3 Bathrooms

1,541 SF

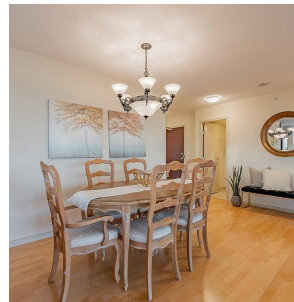
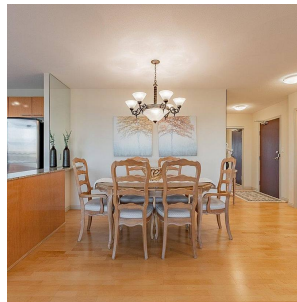
\$722.60 Maintenance Fees

FEATURES

Year Built: 2003

Views: City

Listed By: Homeland Realty



rennie