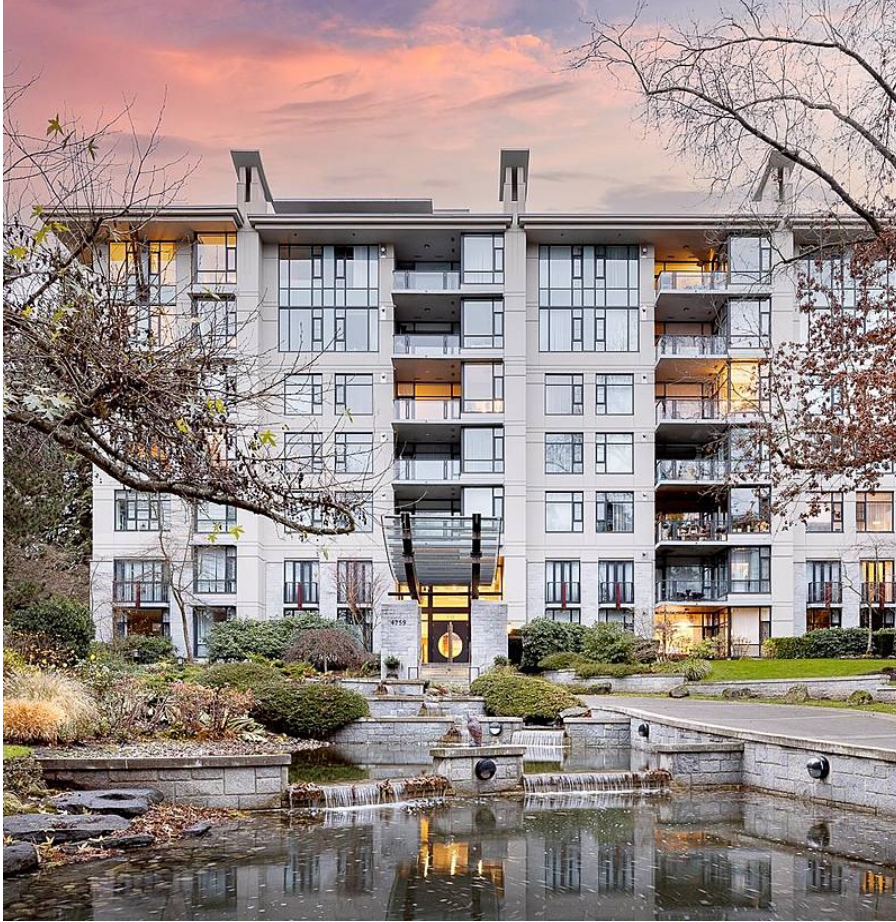


# 312 4759 Valley Drive, Vancouver

\$1,565,000



Elegant 2 Beds + Den CONCRETE "Marguerite House II" by Polygon! A southeast corner unit, lots of light and privacy. Spacious living and dining rooms with open kitchen concept. Gas fireplace, hardwood flooring, high ceiling, stainless steel appliances, granite counter-tops. Master bedroom with deluxe ensuite bathroom and walk-in closet. Huge outdoor balcony overlooks Quilchena Park, fantastic views of the park. Wonderful amenities including concierge, guest suites, gym, hot tub, steam room, swimming pool. Walking distance to Prince of Wales Secondary and Shaughnessy Elementary. Close to Little Flower, York House and Vancouver College. Comes with 1 parking #30, tenant occupied, 24 hours notice for showing!

## KEY INFORMATION

MLS® R2635694

Residential Attached

Quilchena

2 Bedrooms

2 Bathrooms

1,215 SF

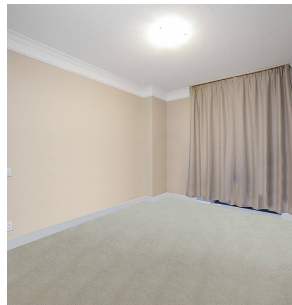
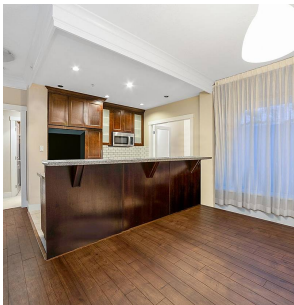
\$595.74 Maintenance Fees

## FEATURES

Year Built: 2005

Views: Quilchena Park

Listed By: Oakwyn Realty Ltd.



rennie