

201 11718 224 Avenue, Maple Ridge

\$419,800



This is an assignment of the best sold-out 1 bedroom floor plan at Sierra Ridge. This plan is incredibly rare as there are no shared adjoining walls with any of the neighbours! The stunning development has an amenity room and a spectacular common roof top lounge with a play and bbq area, where you can enjoy the sweeping vistas of the Fraser River, Golden Ears mountain range, Mount Baker and beyond! The location is perfectly situated just a quick stroll away from the West Coast express, grocery stores, artisan shops, cafes and restaurants of the revitalized Downtown Maple Ridge. There is also Easy access to Golden Ears Park, hiking and biking trails, and freeway access. This boutique project is a definite must see! Expected completion in spring 2022.

KEY INFORMATION

MLS® R2637282

Residential Attached

East Central Maple Ridge

1 Bedroom

1 Bathroom

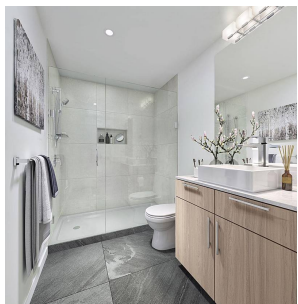
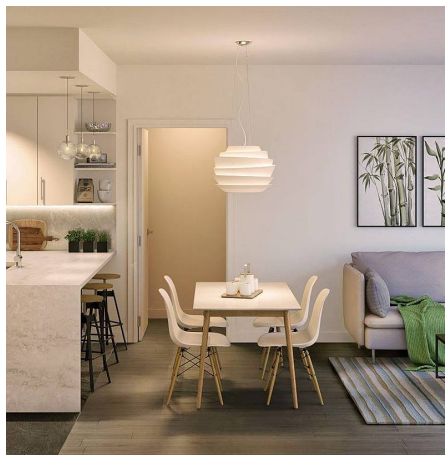
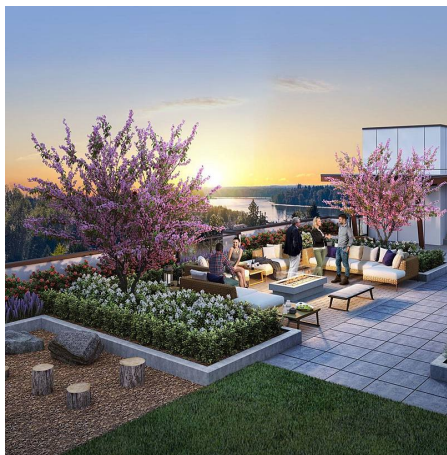
648 SF

\$164.58 Maintenance Fees

FEATURES

Year Built: 2022

Listed By: Sutton Group - 1st West Realty



rennie