

# 4029 Kamloops Street, Vancouver

\$3,000,000



LAND ASSEMBLY – Transit-oriented investment opportunity. Ideal location, immediately adjacent to Nanaimo Skytrain Station. Buy now and hold for future land use changes with potential for high-density under the City of Vancouver's future Nanaimo Station Area Plan. Four lots - 2474 24th Ave & 4011, 4029, 4035 Kamloops Street may be sold together. This site is within close proximity to Trout Lake Park and Community Centre, and is only 10 minutes from downtown via the Expo Line. Please do not walk on the property, property is being sold as-is.

## KEY INFORMATION

MLS® R2637800

Residential Detached

Renfrew Heights

3 Bedrooms

2 Bathrooms

1,558 SF

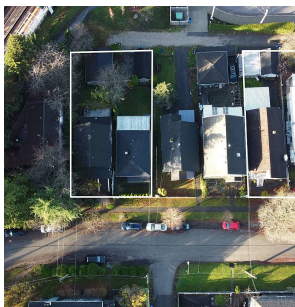
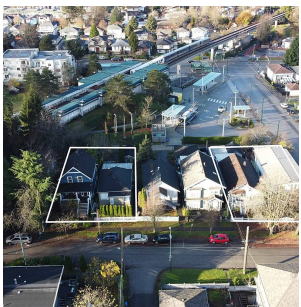
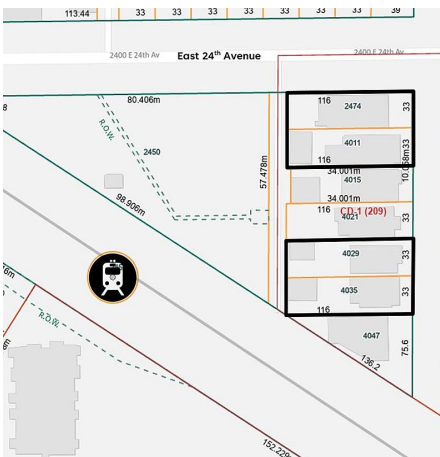
3,828 SF Lot

## FEATURES

Year Built: 1911

Views: NORTH SHORE MOUNTAINS

Listed By: Sutton Group Mattu Realty



rennie