

1805 4458 Beresford Street, Burnaby

\$1,268,800



Amazing Southeast corner unit with 2 balconies & beautiful mountain and city view. This 3 bedrooms + 2 full bath unit is located at Metro town central area and steps to metro SkyTrain station, shopping mall, public library, Crystal mall and Bonser community center which maximize the convenience for daily life. Featuring a practical floor plan with spacious kitchen, lots of storage and pull-down drawers in the cabinets for easy access. Equipped with luxury German appliances and quartz countertop. Amenities include luxurious lobby with concierge, Indoor badminton court, gym, mini golf, lounge with kitchen, swimming pool, hot tub and Sauna room. A must see!

KEY INFORMATION

MLS® R2638041

Residential Attached

Metrotown

3 Bedrooms

2 Bathrooms

1,048 SF

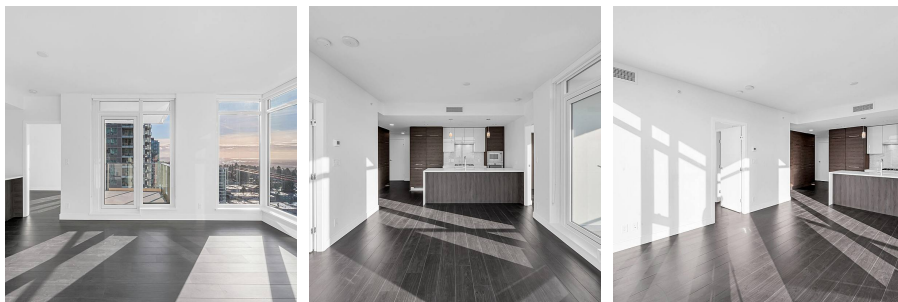
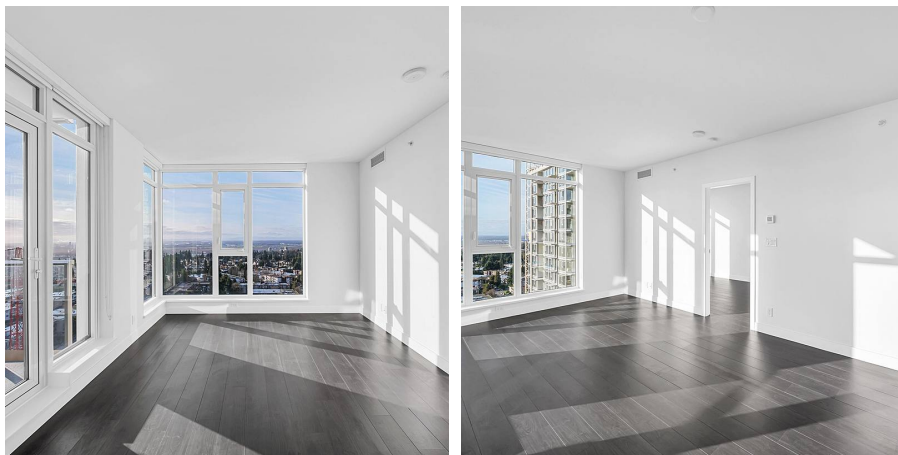
\$545.14 Maintenance Fees

FEATURES

Year Built: 2021

Views: City and mountain view

Listed By: Royal Pacific Realty Corp.



rennie