

# 309 10186 155 Street, Surrey

\$528,000



WELCOME TO THE SOMMERSET! Bright and spacious overlooking the gardens, this 2 bedroom home is South East Facing with lots of windows! New Paint throughout, updated kitchen with New Stainless Steel Appliances & flooring, and sun shades. Professionally serviced GAS Fireplace, bonus: gas is covered in maintenance fees, situated on GREENBELT and PARK VIEWS!! in sought after Guildford! In-suite laundry, COMPLETELY PRIVATE deck with views of trees, park, and mountains, steps to a huge playground and walking trails, Close to T&T, Right in the heart of Guildford Mall, restaurants, Landmark Cinemas, transit and entertainment, easy access to Hwy #1.

## KEY INFORMATION

MLS® R2638289

Residential Attached

Guildford

2 Bedrooms

2 Bathrooms

870 SF

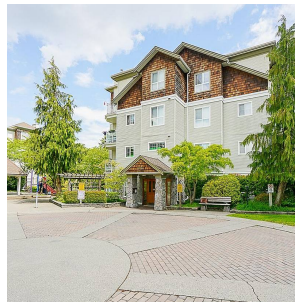
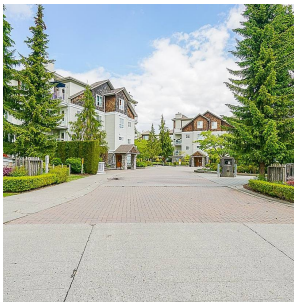
\$329.33 Maintenance Fees

## FEATURES

Year Built: 1997

Views: GARDEN AND MOUNTAIN

Listed By: RE/MAX Crest Realty



rennie