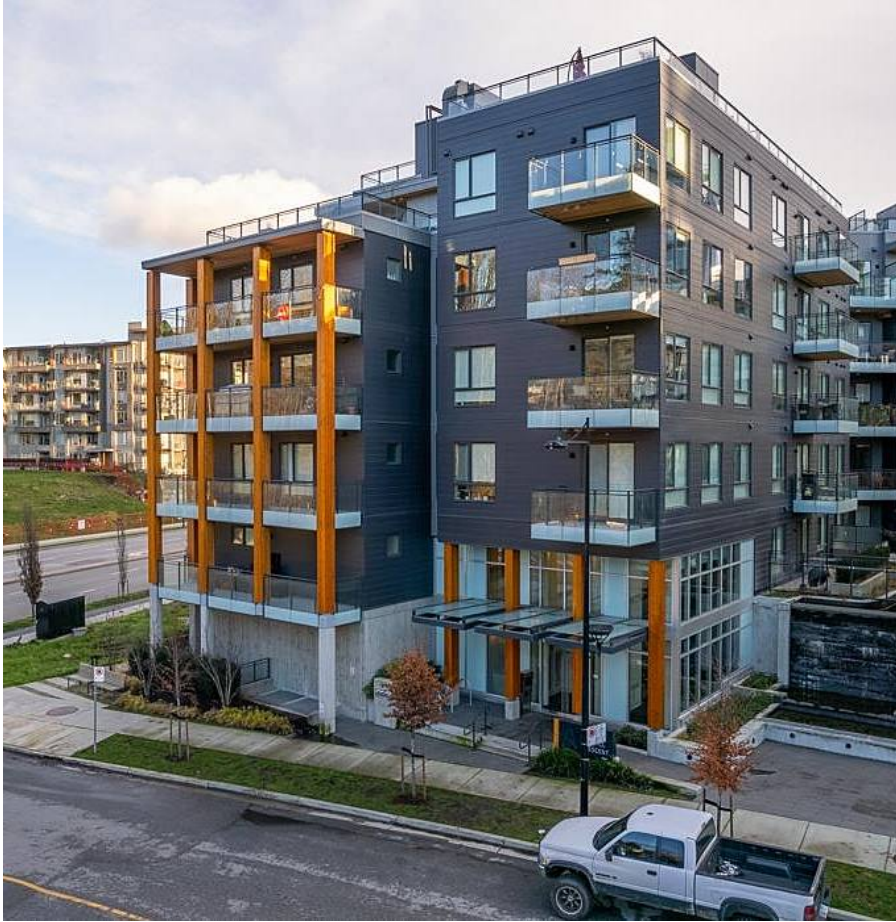


609 3588 Sawmill Crescent, Vancouver

\$888,000



AVALON 1 in the vibrant River District community! Enjoy PENTHOUSE contemporary living in this spacious 896 SF 2 bedroom, 2 bathroom condo that comes complete with 2 parking spots, balcony off the living room and a huge roof top deck that's over 800+ SF. This bright, southwest facing home offers upgraded laminate floors throughout, stainless steel appliances, gas stove, quartz counters, under-cabinet lighting, 2 luxurious bathrooms, radiant in-floor heating, 9' ceilings and insuite washer/dryer. Amenities include fitness ctr, garden courtyard, SkyLounge, SkyBar, guest suites, multi-purpose room & bike storage. All this that's just steps to Save-on-Foods, Shoppers, TD & Scotiabank, Starbucks, Sushi Mura & direct bus to Metrotown 1 blk away.

KEY INFORMATION

MLS® R2638557

Residential Attached

South Marine

2 Bedrooms

2 Bathrooms

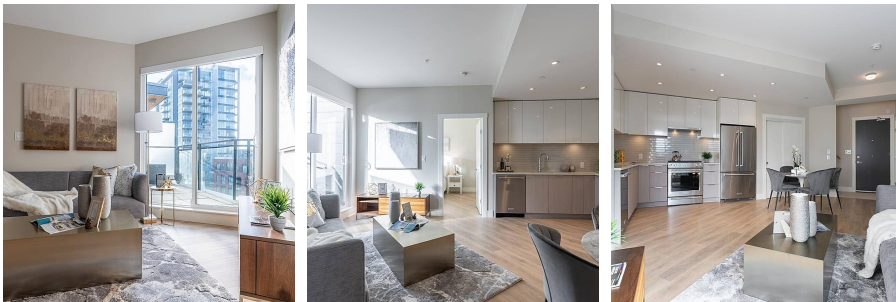
896 SF

\$482.22 Maintenance Fees

FEATURES

Year Built: 2020

Listed By: RE/MAX Austin Kay Realty



rennie