

# 3 1891 Marine Drive, West Vancouver

\$1,299,000



**PARKVIEW PLACE:** experience easy-living with this ground floor, 1 level walk-out that is close to everything. Just a few entryway stairs and no elevator to contend with. On the quiet WESTERN side of the boutique, 10-suite building, the 2 bed unit boasts floor-to-ceiling windows, spacious living areas with H/W floors, crown moldings, a gas F/P, high ceilings, radiant in-floor heating and Wolf, Bosch & Sub-Zero appliances. Walk to all Ambleside amenities including groceries, doctor/dentist, cafes, WV Library, WV Rec/Seniors Centre. Heat, hot water & gas all INCLUDED in strata fee. Secured underground parking, storage locker, 168 sq ft patio. Bring your small dog, unit looks on to Memorial Park and is just 1 block from the seawall!

## KEY INFORMATION

MLS® R2639393

Residential Attached

Ambleside

2 Bedrooms

2 Bathrooms

1,021 SF

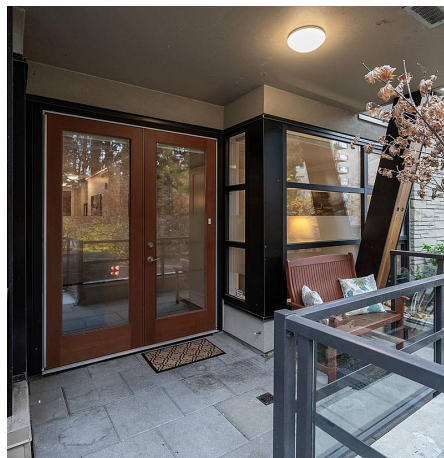
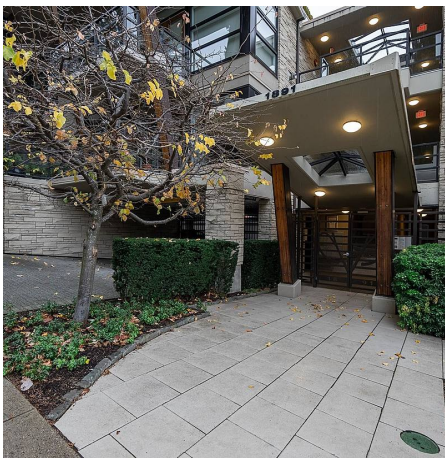
\$971.44 Maintenance Fees

## FEATURES

Year Built: 2010

Views: Greenbelt/Park

Listed By: rennie & associates realty ltd.



**Shannon Pickering**

604.812.1887

spickering@rennie.com

rennie.com/shannonpickering

**rennie**