

# 33315 Rainbow Avenue, Abbotsford

\$1,100,000



HERE'S YOUR POT OF GOLD! Don't let the age fool you! This split entry home is approx. 2374 sq ft with a separate basement entry. Upstairs we have 3 bedrooms with 2 bathrooms, in the basement, we have 1 bedroom, 1 bathroom, recreation room, and laundry. You will enjoy the open concept with a new kitchen, modern S/S appliances, and the living room and dining room have access to a HUGE sundeck. The roof and gutters are approx 3 years young, a newer hot water tank, plus the furnace serviced regularly. Enjoy the large fenced-in backyard with a small shed for your gardening tools. Call today for your personal viewing!

## KEY INFORMATION

MLS® R2639527

Residential Detached

Central Abbotsford

4 Bedrooms

3 Bathrooms

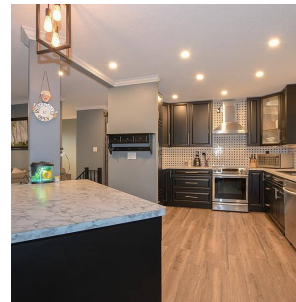
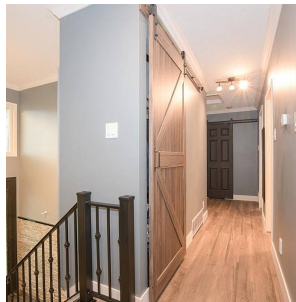
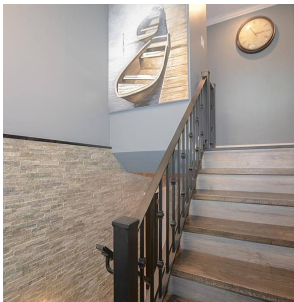
2,374 SF

8,927 SF Lot

## FEATURES

Year Built: 1967

Listed By: Lighthouse Realty Ltd.



rennie