

# 5422 Norfolk Street, Burnaby

\$1,299,999



Lovely side by side duplex located in central BBY with back alley, quiet tree-lined residential street, walking distance to public transit and shopping nearby. Great layout with all bedrooms upstairs and family area downstairs, fully updated with new countertops in the kitchen and washrooms, new S/S kitchen appliances and washer dryer unit. New flooring upstairs, new faucets and light fixtures, lots of storage in hidden space. Amazing mountains and city view in the master bedroom and living room. Fully fenced backyard (just replaced this year) with cozy patio. Do not miss this chance, call and make your appt now!

## KEY INFORMATION

MLS® R2639772

Residential Attached

Central Burnaby

3 Bedrooms

3 Bathrooms

1,014 SF

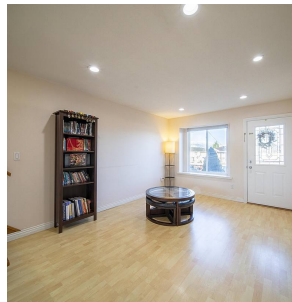
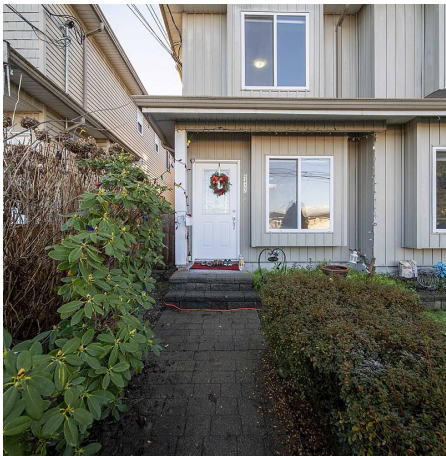
3,390 SF Lot

## FEATURES

Year Built: 2003

Views: MOUNTAINS AND CITY

Listed By: Nu Stream Realty Inc.



rennie