

302 1111 Marinaside Crescent, Vancouver

\$2,399,999



Prestigious waterfront property with unobstructed view of water & marina. Aquarius, an exclusive 12 storey marina front building with only 2 suites per floor! Spacious floor plan. 10' ceil, full reno thru-out to the highest standards in 2018 designed by Adam Becker. <http://www.abeckerdesign.com/> Other features include heated floor, floor to ceiling closet space, built-in king-size bed in the master suite, contemporary lighting, heated bidet, and high end appliances. The Roundhouse Community, sidewalk cafes, Urban Fare & Sea Wall at your door step to enjoy an unmatched lifestyle in the heart of Yaletown. A/C & 2 S by S parking.

KEY INFORMATION

MLS® R2640225

Residential Attached

Yaletown

2 Bedrooms

2 Bathrooms

1,240 SF

\$751.24 Maintenance Fees

FEATURES

Year Built: 1999

Views: WATERFRONT AND MARINA

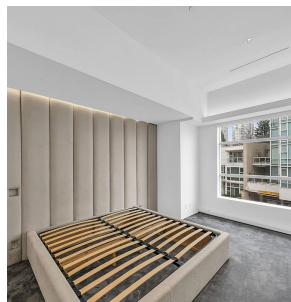
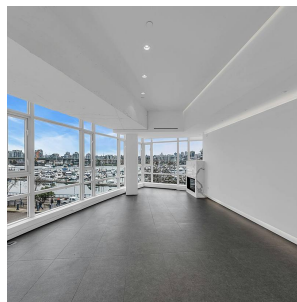
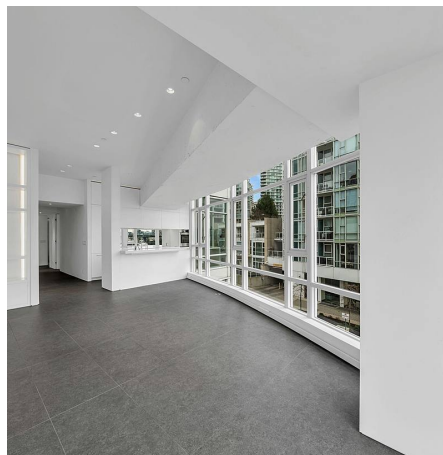
Listed By: RE/MAX Crest Realty



Main Floor - 1240 SQ
Ceiling height - 10'

302-1111 Marin

FT
FT
general indication of the proposed layout only.
Not intended to form part of any contract or warranty.



rennie