

# 609 652 Whiting Way, Coquitlam

\$689,000



"Marquee" by BOSA Bluesky Properties in the masterplanned Lougheed Heights Coquitlam. Bright NE corner unit with lots of windows & natural lights, 192 SF big Balcony, 2 bedrooms 1 bath. OPEN FLOOR PLAN. Gas cooktop, quartz countertops, and Bosch appliances. Huge balcony with beautiful city and mountain views. Amenities including FITNESS CENTER, HEATED outdoor pool, outdoor dining, fireside lounge and indoor entertainment social lounge and concierge. Close to Skytrain, Lougheed Mall, Supermarkets, and Restaurants. Easy access to HWY 1. Strata fee includes natural gas and hot water. CLEAN & SPACIOUS, MOVE IN READY

## KEY INFORMATION

MLS® R2640246

Residential Attached

Coquitlam West

2 Bedrooms

1 Bathroom

727 SF

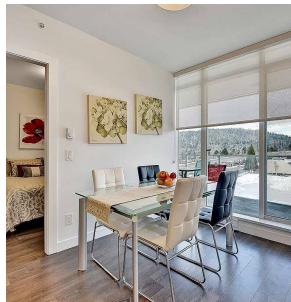
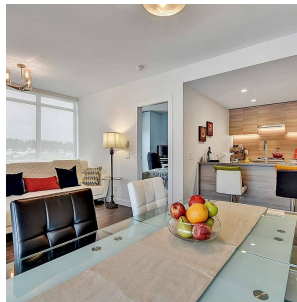
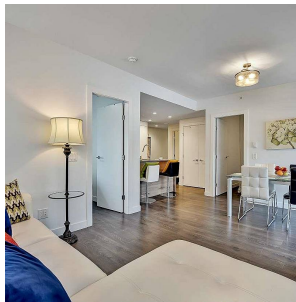
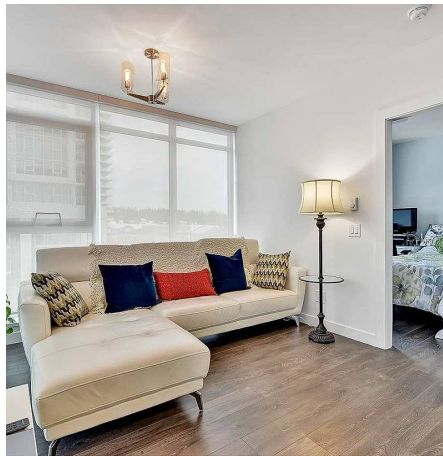
\$426.69 Maintenance Fees

## FEATURES

Year Built: 2020

Views: City and Mountain

Listed By: Royal LePage West Real Estate Services



rennie