

107 12320 222 Street, Maple Ridge

\$499,999



Welcome home to The 222 located in the heart of Maple Ridge on a quiet cul-de-sac with a great sense of zen vibes with location right by a greenbelt! This open & bright corner unit has 2 bed, 2 bath & is only 1 year old with balance of new home warranty. This spacious home offers a sleek, open concept modern kitchen, quartz counter top, stainless steel appliances, laminate throughout, spacious bedrooms, large patio & individually controlled AC/Heat Pump in each living space & comes with 2 parkings & 1 locker. 1 Pet is allowed with no size/breed/height restriction. Rentals allowed. Centrally located and easy access to everything in the palm of your hands! Just mins away from shopping, transit, Lougheed Hwy 1 & Port Haney Station for West Coast Express. Don't wait, this can be your home!

KEY INFORMATION

MLS® R2640661

Residential Attached

West Central

2 Bedrooms

2 Bathrooms

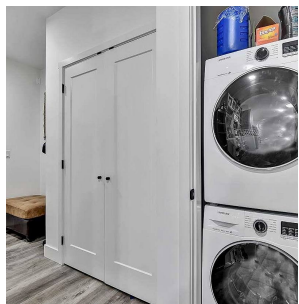
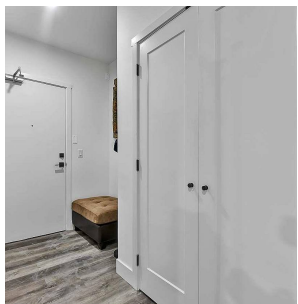
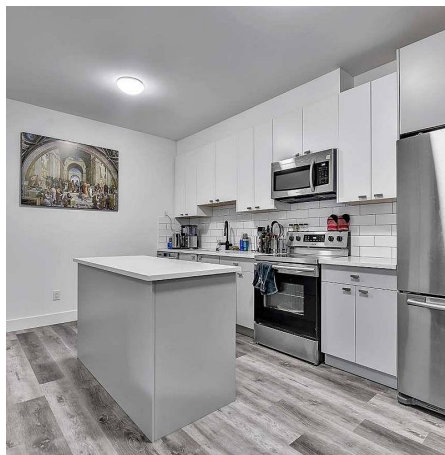
964 SF

\$342.04 Maintenance Fees

FEATURES

Year Built: 2020

Listed By: Luxmore Realty



rennie