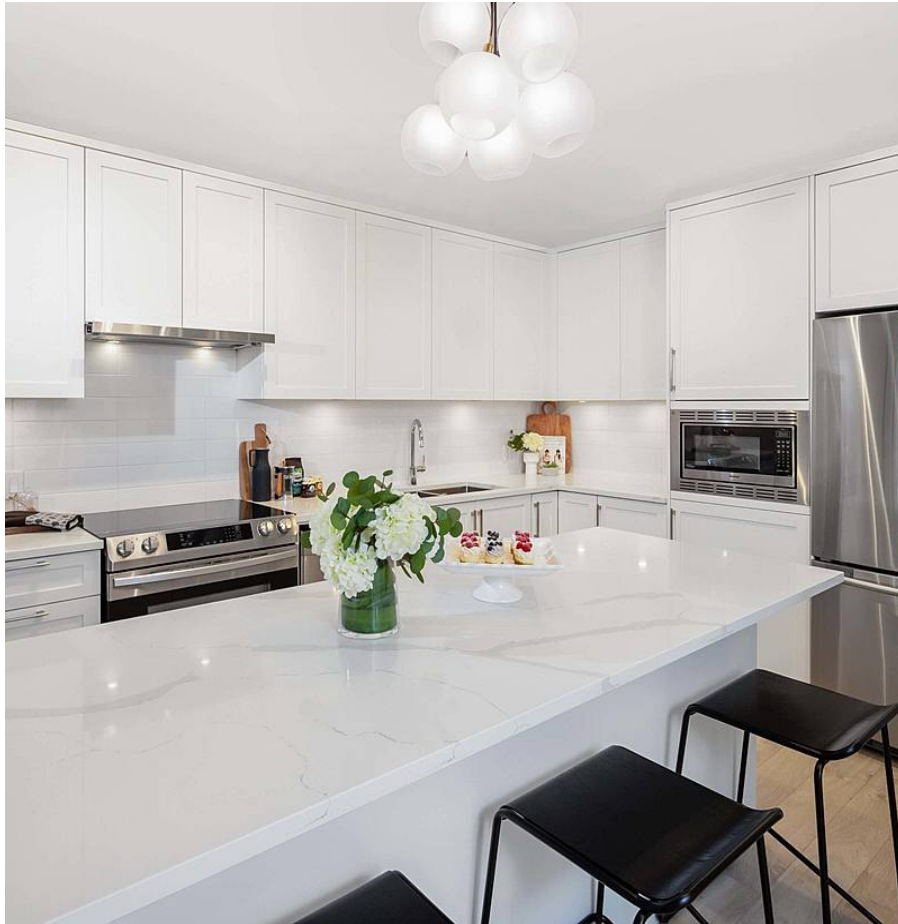


215 2160 Grant Avenue, Port Coquitlam

\$599,000



Welcome to the highly sought after development "The Bloc", constructed by reputable Maclean homes in the heart of Port Coquitlam. This SOLD OUT Corner floor plan offers spacious open concept living with maximum privacy and quietness. 2 bed/2Bath, 879 sq/ft home features generously sized rooms with seamless indoor/outdoor flow. Finished with a gourmet kitchen with modern cabinetry, quartz countertops, and designer fixtures. Spa like bathrooms with porcelain tiles and deep soaker tubs and polished hardware for you to unwind. Steps to notable shopping, trails, transit and easy access to hwy 1. 1 Parking included with EV stalls. Be the first to live in this beautiful home!

KEY INFORMATION

MLS® R2641128

Residential Attached

Glenwood

2 Bedrooms

2 Bathrooms

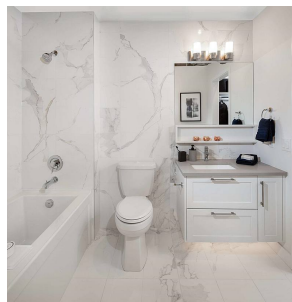
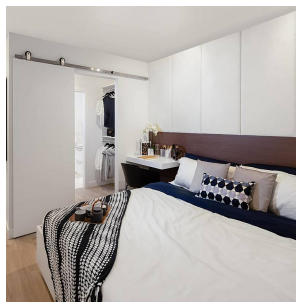
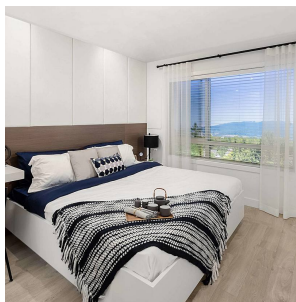
879 SF

\$315.47 Maintenance Fees

FEATURES

Year Built: 2021

Listed By: Sutton Group-West Coast Realty



rennie