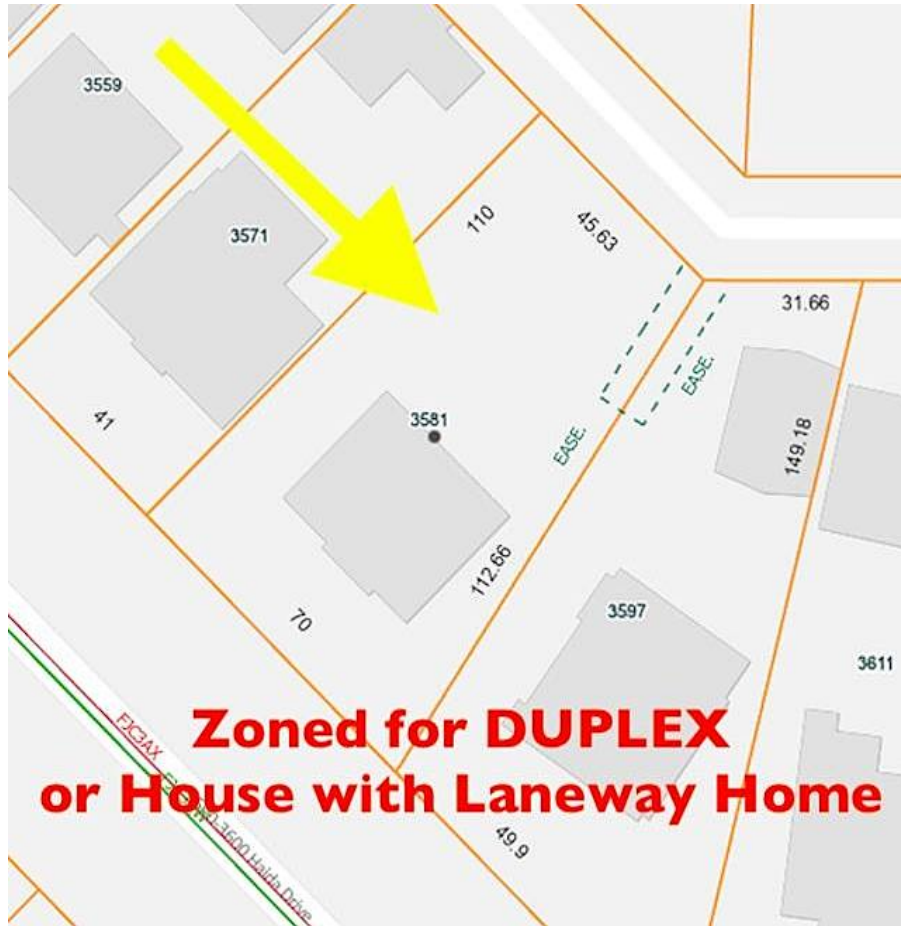


3581 Haida Drive, Vancouver

\$2,399,999



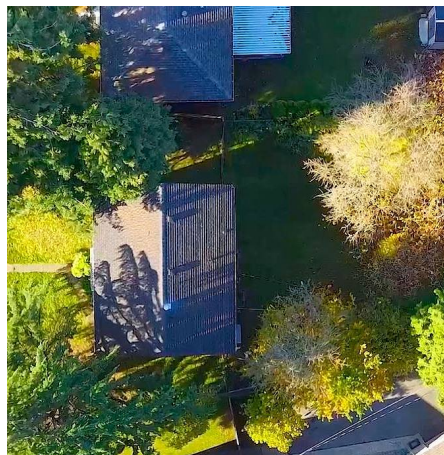
Welcome to Renfrew Heights... Beautiful, Quiet & Family friendly! Perfect for Developers, Builders or Investors! With Zoning options to develop a Duplex combined with a rare 70ft WIDTH, this 6,360 sqft lot has potential to build a SIDE BY SIDE DUPLEX or Build a Large Dream home w Laneway House. So many choices: Develop to Sell or Develop to Live on one side and sell/rent the other or Buy & Hold ! Ideal for families, this lovely home is steps away from Vancouver Christian School, Falaise Park & walking distance to Renfrew Elementary & Windermere Secondary. Mountain & City Views, Central & only minutes to Superstore, restaurants, coffee shops, easy access to Hwy 1 & Transit.... this property has everything! Call now for a private showing.

KEY INFORMATION

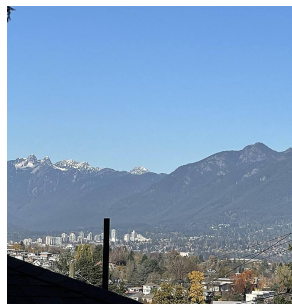
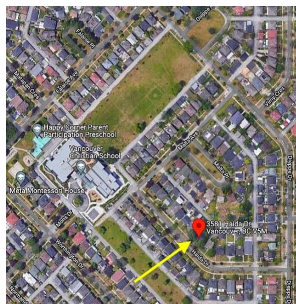
MLS® R2641224
Residential Detached
Renfrew Heights
4 Bedrooms
2 Bathrooms
1,505 SF
6,360 SF Lot

FEATURES

Year Built: 1948
Views: Mountains & City
Listed By: Keller Williams Elite Realty



The lot dimensions shown are estimated and should be verified by survey



rennie