

12225 250 Street, Maple Ridge

\$3,890,000



Opportunities like this don't come around often! This home offers possible future subdivision potential on a flat 100% usable 2.44 acre lot, with city water, sewer and all services. Minutes from shopping and surrounded by residential properties. Currently has a 2 bedroom authorized suite with lots of revenue potential. This home that is certified earthquake proof has all the amenities including control 4 and radiant heating. 4 bedrooms up and 3 bedrooms down, so it's perfect for the growing family or investor waiting for the property to reach it's full potential! Opportunity knocks with this great holding property. Call to find out about possible future potential and previous alr removal application.

KEY INFORMATION

MLS® R2641278

Residential Detached

Websters Corners

7 Bedrooms

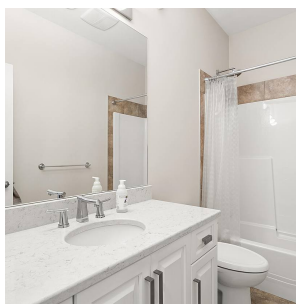
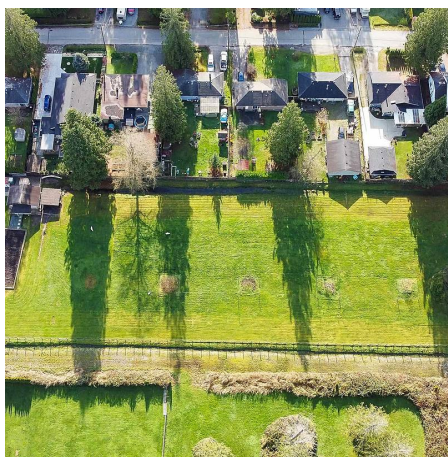
4 Bathrooms

3,739 SF

FEATURES

Year Built: 2011

Listed By: Stonehaus Realty Corp.



rennie