

14079 230 Street, Maple Ridge

\$1,650,000



GST INCLUDED. BRIDLE RIDGE by MORNINGSTAR is the hidden gem of Silver Valley. Surrounded by green space, trail networks, a brand new neighbourhood park and the most exquisite valley views! NEW MODEL - the 2,789 sq.ft. FAIROAK home has a beautiful exterior with accents of stone, shingles & wood while interior boasts wide plank laminate, rich quartz counters, SS appliances plus W/D. Soaring 10' ceilings (some vaulted), huge windows & large kitchen island. Master features a sitting room (or change to 4th bedroom) plus a spa-like ensuite with a massive glass shower. Double car garage. Fully fenced & landscaped backyard backing onto greenbelt. Optional basement choices available.

KEY INFORMATION

MLS® R2641375

Residential Detached

Silver Valley

3 Bedrooms

3 Bathrooms

2,789 SF

3,657 SF Lot

FEATURES

Year Built: 2023

Listed By: Mstar Realty Ltd.



FAIROAK 'D'



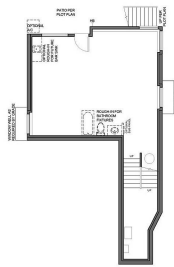
MAIN FLOOR PLAN
841 FT.²



UPPER FLOOR PLAN - SITTING ROOM
1121 FT.²



UPPER FLOOR PLAN - 4 BEDROOM
1121 FT.²



BASEMENT PLAN - UNFINISHED
827 FT.²

rennie