

3307 2135 Springer Avenue, Burnaby

\$726,900



This west-facing, one-bedroom home offers an efficiently-designed living space and outdoor balcony area with an upper-level city view. Enjoy thoughtful home features including high-end kitchen appliances, built-in storage solutions, air conditioning, premium laminate flooring, and high-quality build materials selected for both sleek design and long-lasting durability. Experience over 22,000 SF of indoor and outdoor amenity space at SLATE, including The Health Club, social lounge, co-working space, and more. Located within a 5-minute walk to the SkyTrain Station and 10-minute walk to Brentwood Town Centre. Built by local developer Beedie Living with over 65 years of building experience. Book an appointment today to learn more.

KEY INFORMATION

MLS® R2641301

Residential Attached

Brentwood Park

1 Bedroom

1 Bathroom

578 SF

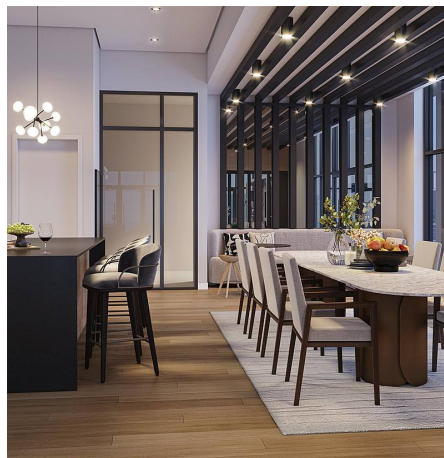
\$278.71 Maintenance Fees

FEATURES

Year Built: 2026

Views: CITY AND MOUNTAIN

Listed By: Beedie Living Realty



rennie