

710 3533 Ross Drive, Vancouver

\$2,288,000



The Residences at Nobel Park by Polygon. Located at UBC's award-winning Wesbrook Village. This S.W facing corner unit over 1270 sqft features open and functional layout. Brand name stainless steel appliances, 9' high ceilings, A/C and more! 3 Spacious bedrooms, especially the master bedroom, comes with a walk-in closet and a spa-inspired ensuite with tiled walls. Walking distance to restaurants, shops and school. Great for live-in or investment! Book your showing today.

KEY INFORMATION

MLS® R2641344

Residential Attached

University

3 Bedrooms

2 Bathrooms

1,276 SF

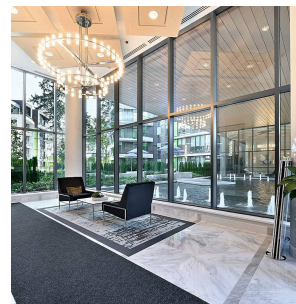
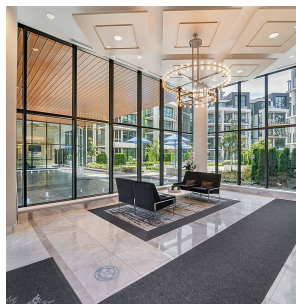
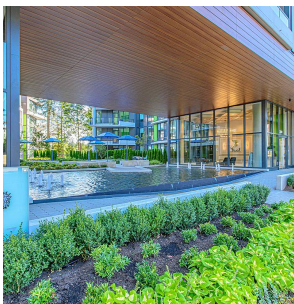
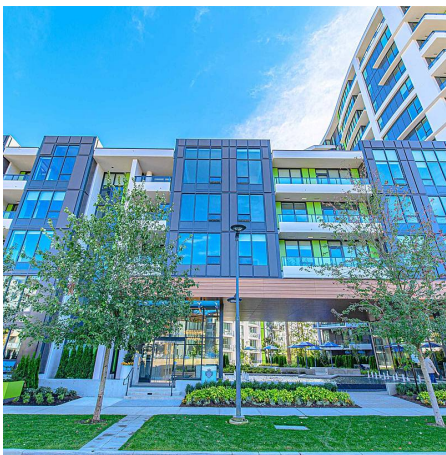
\$512.77 Maintenance Fees

FEATURES

Year Built: 2020

Views: .

Listed By: Sunstar Realty Ltd.



rennie