

305 3588 Crowley Drive, Vancouver

\$599,900



Welcome to Nexus ! This award winning concrete building is situated on the quiet street of the well established Joyce-Collingwood community. Rarely available corner unit offers 2 bedrooms plus den. Southeast facing with functional layout provides lots of natural light. Convenient location, 5 minutes walk to Joyce Skytrain Station, close to Central Park, Metrotown and surrounded by four parks! Gym and party room, one parking & one locker. Rentals allowed. Great opportunity for investment and first time buyer. Don't miss out!!!

KEY INFORMATION

MLS® R2641514

Residential Attached

Collingwood

2 Bedrooms

2 Bathrooms

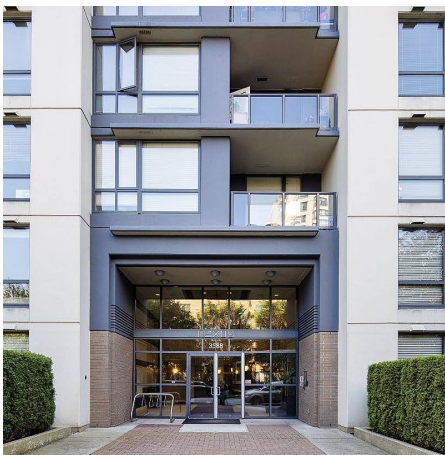
917 SF

\$406.51 Maintenance Fees

FEATURES

Year Built: 2003

Listed By: Nu Stream Realty Inc.



rennie