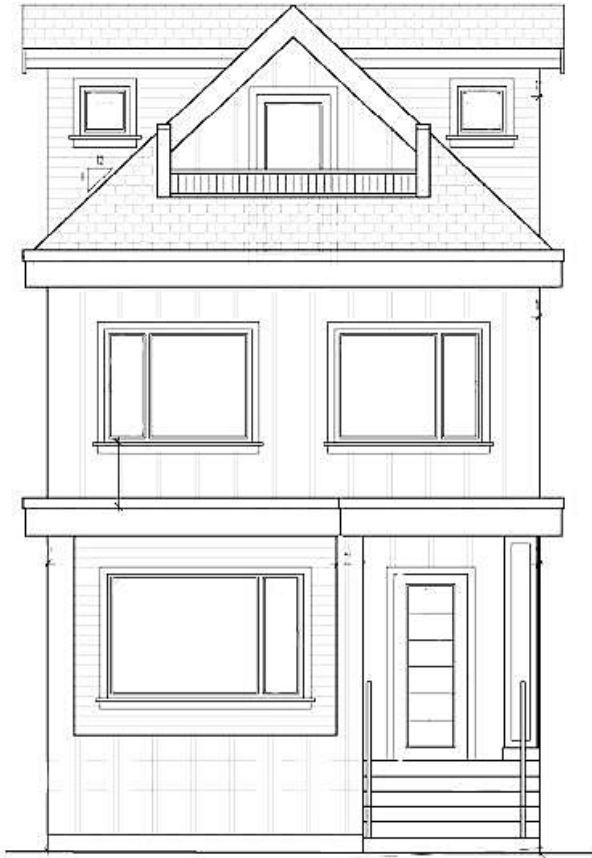


# 1933 Templeton Drive, Vancouver

\$2,899,000



Super rare 50x100' lot with TWO PIDs in the beloved Grandview Woodland neighborhood! Each PID is 25x100'. Opportunity to build: two of your own single detached homes, two pairs of small half duplexes, a single family home, duplex, triplex or duplex + infill! Location is awesome with lots of development happening all around - just a block to Garden Park and close to Commercial Drive & major transit hubs! Architectural drawings and interior concept plans for two single detached homes available to view. Please do not disturb the tenant.

## KEY INFORMATION

MLS® R2641831

Residential Detached

Grandview Woodland

4 Bedrooms

2 Bathrooms

1,639 SF

5,000 SF Lot

## FEATURES

Year Built: 1951

Listed By: Stilhavn Real Estate Services



rennie