

# 23 2838 Livingstone Avenue, Abbotsford

\$699,800



Welcome home to Gardner by Mosaic! These homes are designed around our Harvest Table kitchens that's great for prepping, sharing and lingering. Two bedrooms up top and a really big bathroom too with double sinks. On the lower level, there's a full bathroom and room for two cars - One in and one out. Living by a park changes everything - Open green spaces for furry friends to run, playgrounds for the little ones and picnic spaces for Sundays with the family. Access to the highway is around the corner, connecting to all of the main thoroughfares running east and west. There's also Highstreet Shopping Centre just up the road for all of life's essentials. Call today for your private viewing!

## KEY INFORMATION

MLS® R2641861

Residential Attached

Abbotsford West

2 Bedrooms

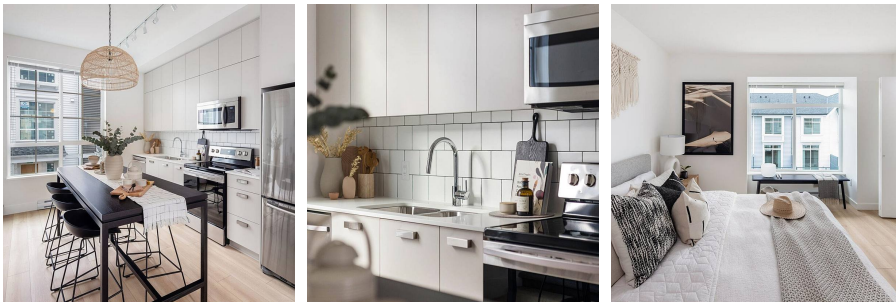
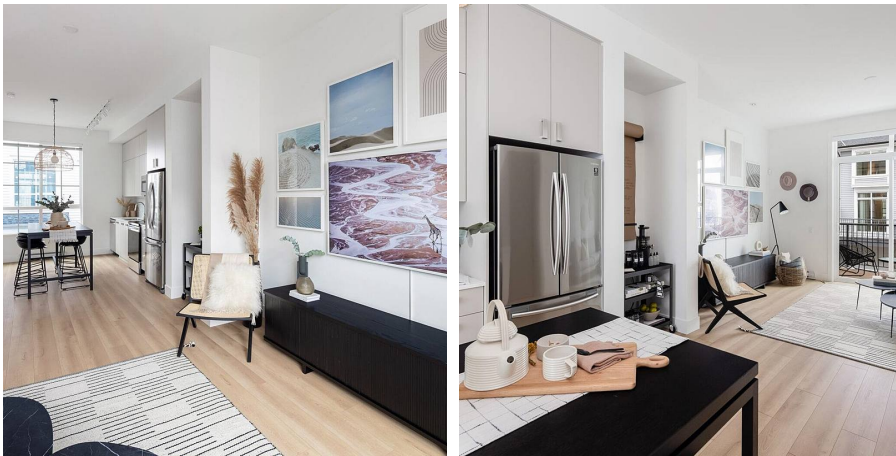
2 Bathrooms

1,056 SF

## FEATURES

Year Built: 2020

Listed By: RE/MAX All Points Realty



rennie