

# 29269 Galahad Crescent, Abbotsford

\$2,999,000



Located on a nice quiet non through road in the desirable Mt. Lehman community, you'll find this beautiful 5 acre property offering many features. This 4 bdrm, 2 bath, Lineos Cedar home has been very tastefully updated as you'll see from the photos. On the warm summer days you can enjoy the beautifully designed inground pool and landscaping beside the home as you look over your private parklike setting. There is a full concrete slab 90 x 40 ready with power/water to build your dream shop or park extra vehicles. Brand new driveway heading to the rear of the property which features a great location for a building site of your future dream home enjoying an incredible view with a recently upgraded driveway built to the back. B/U generator, full auto irrigation, security system and more....

## KEY INFORMATION

MLS® R2641775

Residential Detached

Bradner

4 Bedrooms

2 Bathrooms

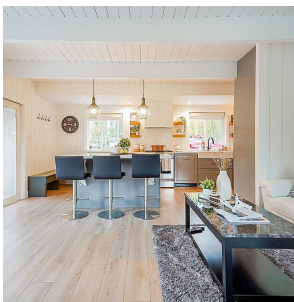
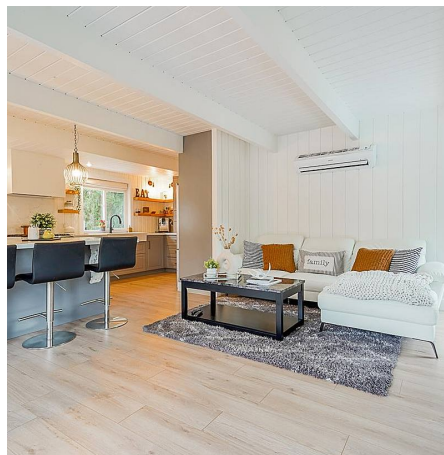
2,655 SF

## FEATURES

Year Built: 1977

Views: VALLEY VIEW/NORTH SHORE MTN

Listed By: Sutton Group-West Coast Realty



rennie