

163 2280 163 Street, Surrey

\$899,000



Top 5 reasons why this townhouse will move quick. #1. LOCATION - Super close to parks, trails, shopping, schools + transit. Amazing walkability. #2. COMPLEX - Soho was built by Zenterra in 2017. Awesome clubhouse w/gym, party rm, kids area, billiards + playground. Amazing strata (fee only = \$247). #3. END UNIT - This rare outside unit stands out with it's red feature & extra windows. The roof top deck is huge w/glass railings & epic views. #4. FEATURES - Fresh paint, new wood floors (2nd lvl), 9' ceilings, high end appls, huge Quartz island, open modern kitch, elec fireplace, powder on main, 1 car garage w/framed in 3rd bedrm (own entrance), fenced yard & did I mention a crazy roof top deck ?? #5. PRICE - All this for under \$900K is unheard of for over 1700 sq/ft.

KEY INFORMATION

MLS® R2642108

Residential Attached

Grandview Surrey

3 Bedrooms

3 Bathrooms

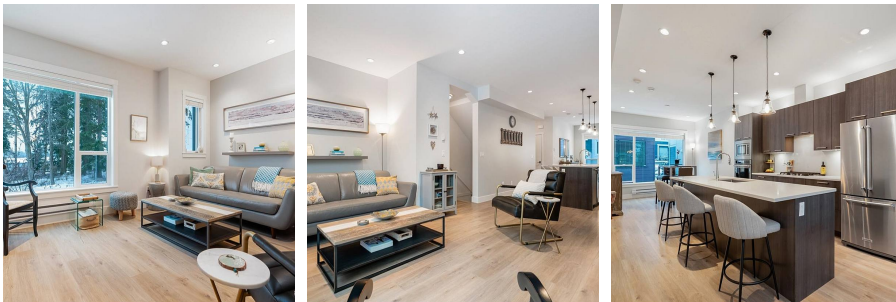
1,723 SF

FEATURES

Year Built: 2017

Views: South West overlooking park

Listed By: Keller Williams Elite Realty



rennie