

1409 13399 104 Avenue, Surrey

\$499,000



Amazing 1 bdrm d.Corize condo north facing on 14th floor. Unit offers a private deck, a kitchen with stainless steel appliances, quartz countertops, and washer and dryer. Enjoy a spacious and functional layout in a modern living space with your private master bedroom. Located close to the Skytrain, SFU Surrey campus, shopping mall, library, and a wonderful amenities area that included 1 parking, 1 locker, one storage room, two elevators, a full fitness center, media room, and library. Right in the heart of University District, City Hall, SFU Campus & Sky train, mall, restaurants, coffee shop. It's a great option for both investors & self-live in!! Must see!

KEY INFORMATION

MLS® R2642274

Residential Attached

Whalley

1 Bedroom

1 Bathroom

544 SF

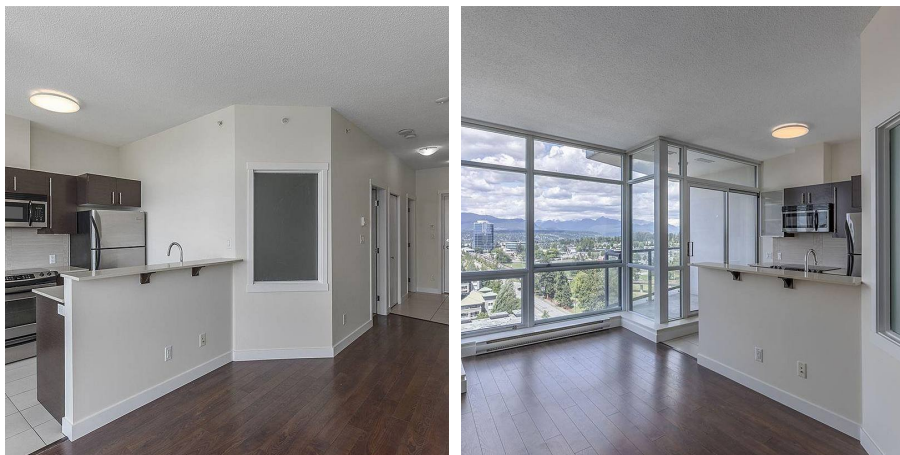
\$183.91 Maintenance Fees

FEATURES

Year Built: 2009

Views: MOUNTAIN

Listed By: YPA Your Property Agent



rennie