

2103 5470 Ormidale Street, Vancouver

\$619,900



Welcome to Wall Centre Central Park at the junction of Vancouver and Burnaby. This beautiful south facing unit features an abundance of natural light & city view, functional layout, quartz countertops, gas range and built-in microwave. Amenities include fitness centre, rooftop garden and meeting room. 1 Secured Parking stall and 1 Storage Locker are included. Walking distance to Skytrain, grocery, restaurants and Central Park. A few minutes' driving to Metrotown. Balance of 2-5-10 New Home Warranty. Call now for your private viewing.

KEY INFORMATION

MLS® R2642415

Residential Attached

Collingwood

1 Bedroom

1 Bathroom

541 SF

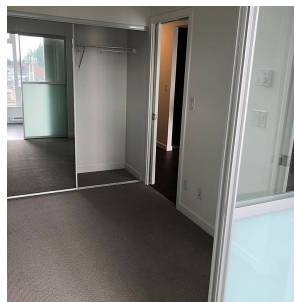
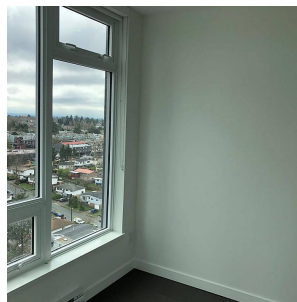
\$283.75 Maintenance Fees

FEATURES

Year Built: 2018

Views: CITY VIEW

Listed By: Interlink Realty



rennie