

# 5 20176 68th Avenue, Langley

\$749,000



Steeplechase is close to all amenities but located in a quiet location in Willoughby heights! This bright & spacious END UNIT offers 1160 sq ft & an open floor plan w/ 2 bdrms & 2 bthrms. Main flr includes a living rm w/ cozy fireplace, dining area & kitchen w/ S/S appliances inc built in microwave & breakfast bar w/ seating for 3. Step out to the south facing upper deck for your morning coffee. Head up to the large master bdrm w/ his & hers closets & a renovated ensuite including new glass shower w/ rain head & double sinks. Laundry w/ 1 yr old washer/dryer, another well sized 2nd bdrm & additional 4 pc main bth complete the upstairs pkg! Parking for 3 cars w/ the double tandem garage & driveway that fits a full size truck! The fenced raised yard leads to lots of street parking!

## KEY INFORMATION

MLS® R2642442

Residential Attached

Willoughby Heights

2 Bedrooms

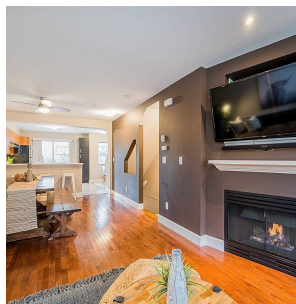
2 Bathrooms

1,150 SF

## FEATURES

Year Built: 2003

Listed By: RE/MAX Treeland Realty



rennie