

# 23 32633 Simon Avenue, Abbotsford

\$699,900



Built by Reputable Builder ONNI Group, This popular corner Unit 3 bed/3 bath beautiful Townhouse, fabulous Allwood Place in West Abbotsford. A centrally located development minutes from Highway 1, mall and superstore. Located on the back side of the development, quite, with plenty visitor parking, this 2 year old townhome (with builders warranty still remaining through 5 years and 10 years) featuring a deck off the main floor covering your patio and gated backyard all very well maintained. Each owner has access to the development club house which features full size equipped gym, cinema room and party room which can be booked for gatherings. Low maintenance fees, pets allowed with restrictions and rentals are ALLOWED. This one won't last long.

## KEY INFORMATION

MLS® R2642517

Residential Attached

Abbotsford West

3 Bedrooms

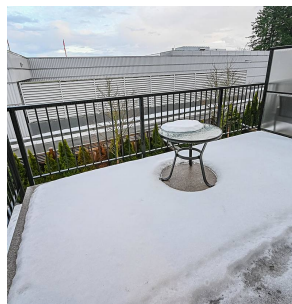
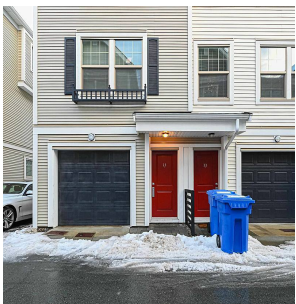
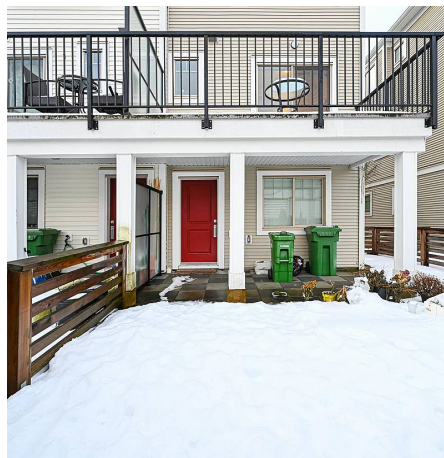
3 Bathrooms

1,300 SF

## FEATURES

Year Built: 2017

Listed By: Royal Pacific Realty Corp.



rennie