

6460 Beatrice Street, Vancouver

\$1,289,000



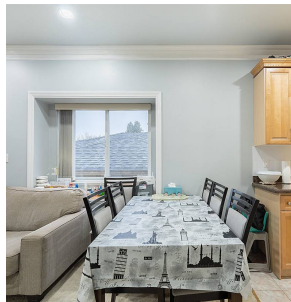
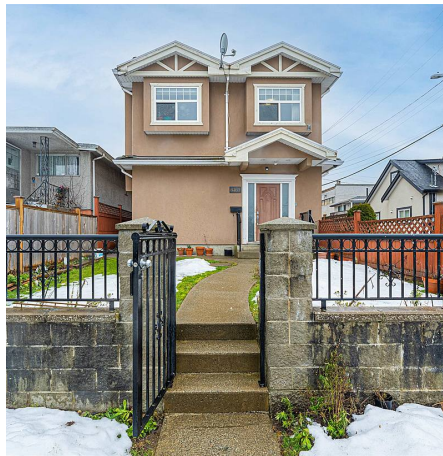
Front half Duplex located in a highly desirable Killarney Area. Duplex offers 3 Generous sized BEDROOMS on the top floor along with 2 baths. Basement has separate 1 BEDROOM SUITE at the ground level entry. Features include Radiant heat, Oak cabinets, Gas Fireplace, Granite counters, 9 feet ceiling, carpet flooring with NEW laminate underneath. This location is Very walkable so most errands can be accomplished on foot. It is in a high-potential area for redevelopment and has great investment potential. First showing on Saturday 15th 12pm-1pm & Public Open House Sunday January 16 2-4 pm.

KEY INFORMATION

MLS® R2642561
Residential Attached
Killarney
4 Bedrooms
3 Bathrooms
1,358 SF

FEATURES

Year Built: 2006
Listed By: Royal Pacific Realty Corp.



rennie