

# 2552 Trillium Place, Coquitlam

\$1,598,000



This spacious 3,000 sq ft home is located just below the Westwood Plateau area and is within walking distance of several bus stops. Westwood Plateau Village, Coquitlam Center and other shopping/amenities can easily be reached by both public transit and walking. Contains a double garage for parking or additional storage. The backyard and patio are fenced, providing for privacy. School catchment: Mountain Meadows Elementary, Scott Creek Middle, and Heritage Woods Secondary.

## KEY INFORMATION

MLS® R2642773

Residential Detached

Summitt View

5 Bedrooms

4 Bathrooms

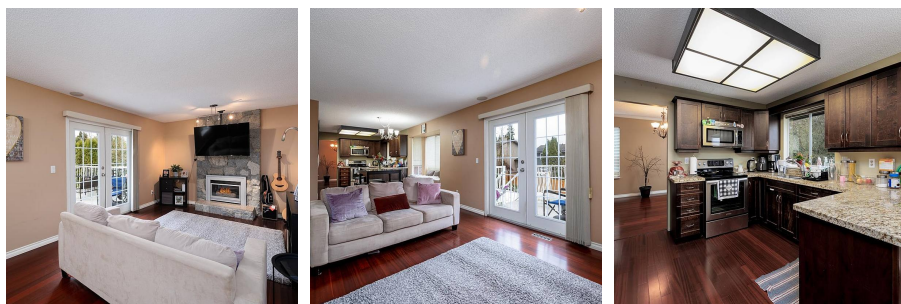
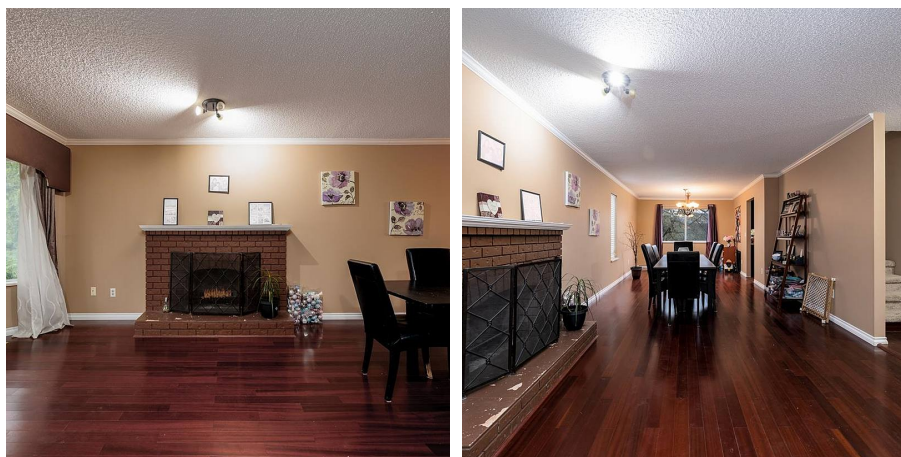
3,231 SF

7,027 SF Lot

## FEATURES

Year Built: 1984

Listed By: Oakwyn Realty Encore



rennie