

12150 244 Street, Maple Ridge

\$1,799,900



2 ACRES - Zoned RS-3 and in the ALR (agricultural land reserve) This flat 2 acres, has no creeks, is on city water and sewer offers an ideal site to buy and hold, or build your dream home. Potential for a garden suite too. Ideally located next to Prestigious Academy Park, walking distance to renowned Meadowridge Private School, and just 5 km from downtown Maple Ridge. Value in land, current home was built in the 1950s, rancher with 2 bedrooms, plus flex room on the main, and basement with a third bedroom, and rec room down. Plus a large flex room, and workshop space. See drone video attached. *NO OPEN HOUSES, dog on property, do not enter without an appointment.

KEY INFORMATION

MLS® R2642865

Residential Detached

Websters Corners

3 Bedrooms

1 Bathroom

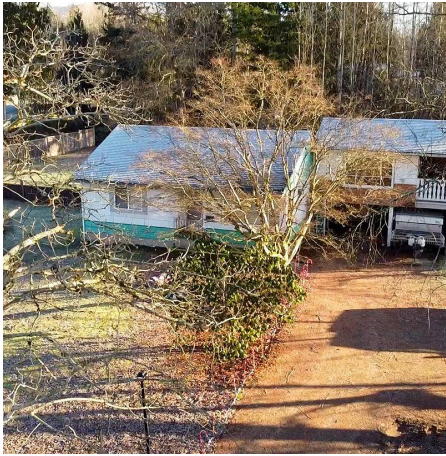
2,447 SF

FEATURES

Year Built: 1951

Views: Treed View

Listed By: RE/MAX LIFESTYLES REALTY



rennie