

# 10265 238a Street, Maple Ridge

\$2,499,233



Beautiful 3 Level home with fully finished one bedroom basement suite in Very good area of Maple Ridge Backing onto Albion Park where all the events happen. Enjoy summers watching baseball games and take a two minute walk through the trail to enjoy Jamaican Festival and the Maple Ridge Fair. This Beautiful home is located in a prime fast growing neighborhood. Take a 5 min walk to brand new 30 million elementary school and rec Centre. So many beautiful lakes just minutes away. In the front of the home you can watch the horses run around while drinking your morning tea sitting in your own house. This house has so many things to offer and is definitely unique and a rare find.

## KEY INFORMATION

MLS® R2644123

Residential Detached

Albion

4 Bedrooms

4 Bathrooms

3,150 SF

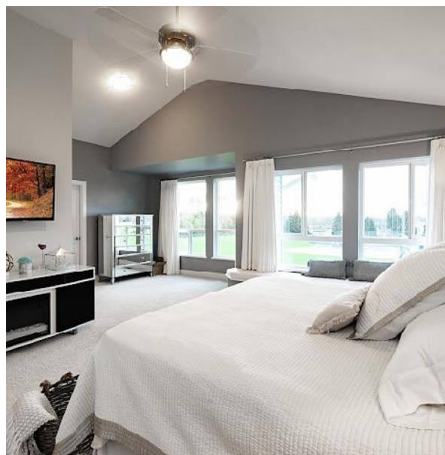
3,652 SF Lot

## FEATURES

Year Built: 2017

Views: Park

Listed By: Sutton Group-West Coast Realty (Surrey/120)



rennie