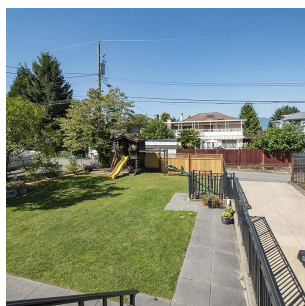
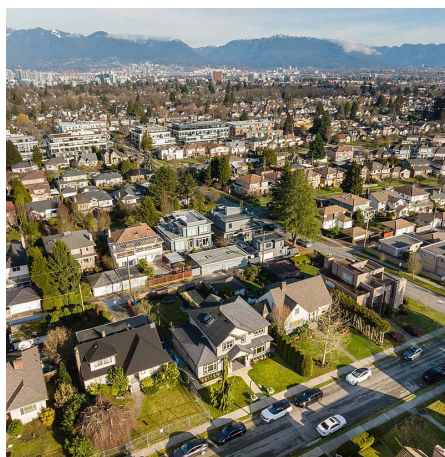
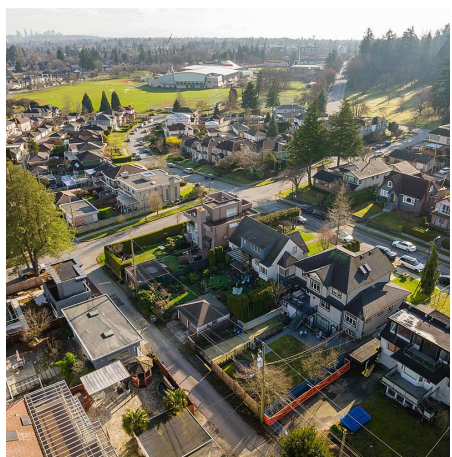


# 425 W 28th Avenue, Vancouver

\$4,898,000



Beautiful family residence by Trasolini Construction building custom high quality homes for over 30 years. This SOUTH facing home features a timeless design w/ interior 4,485 SQFT, 58x128.92 lot. 7 bedrooms, 4 bathrooms. Open floor plan w/ high ceilings, large living spaces. TONS of recent updates by a designer: new paint, white oak floors, new bathroom tiling, custom WIC, Gourmet new kitchen WOLF and S/S appliances, cabinetry, Mil-Work, Hunter Douglas blinds and more. Large entertaining games room in the basement! Back yard is private, North facing with mountain views. New landscaping by Green Room Garden. New Custom Auto-double gate. In the heart of Vancouver's Cambie area, 1 blk Queen Elizabeth Park, 3 blk to Skytrain, Hillcrest Community Centre, Oakridge mall, Douglas Park

## KEY INFORMATION

MLS® R2644650

Residential Detached

Cambie

7 Bedrooms

4 Bathrooms

4,485 SF

7,800 SF Lot

## FEATURES

Year Built: 2009

Views: NORTHERN CITY & MOUNTAIN VIEW

Listed By: rennie & associates realty ltd.



**Simon Lai** PREC\*  
778.881.3603  
slai@rennie.com  
rennie.com/simonlai

**rennie**