

12929 Crescent Road, Surrey

\$6,499,000



RARE FIND 2.96 Acres Waterfront Property with SUBDIVISION POTENTIAL! 4th largest Waterfront estate on the Prestigious Crescent Road. A long windy driveway leads you to this private estate overlooking the ocean, city, mountain views on 3 levels. Solidly built with attention to detail, hardwood floor, crown molding throughout, Lutron Lightings. Gourmet Chef's Dream kitchen with oversized granite island and workstation. One bdrm ensuite plus a den on the main and five bedrooms upstairs including a guest room. Master Suite boasts extensive OCEANVIEWS & spa-like bathroom. Two more bdrms in the walk-out basement with roughed-in suite and separate access. 2 laundries. Wrap around decks. Minutes walk to the restaurants, Crescent View Point & Crescent Park. Easy access to Nico-Wynd golf and Hwy 99.

KEY INFORMATION

MLS® R2644484

Residential Detached

Elgin Chantrell

8 Bedrooms

6 Bathrooms

6,500 SF

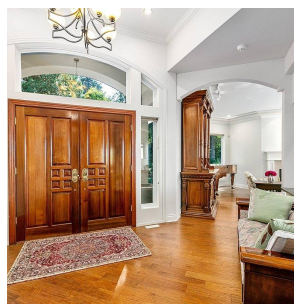
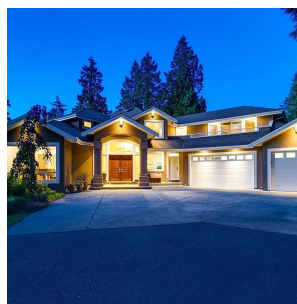
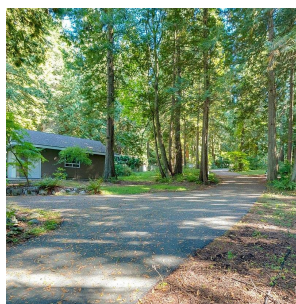
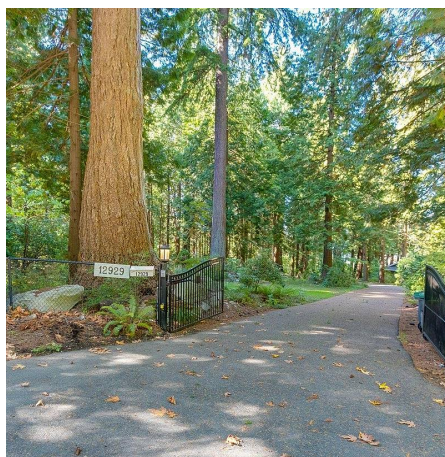
128,999 SF Lot

FEATURES

Year Built: 2002

Views: Unobstructed Ocean, City & Mt.

Listed By: RE/MAX Colonial Pacific Realty



rennie