

11939 Hall Street, Maple Ridge

\$2,350,000



Opportunity for BUILDERS, DEVELOPERS, INVESTORS: under the Lougheed Corridor Residential Plan of Maple Ridge, the lot has potential to develop townhouses and low rise building with density up to 2.5 FSR; or possible develop for fourplex by its own. Please verify with the City of Maple Ridge. Located near Maple Ridge city center, walk distance to shops, parks, restaurants and all kinds of schools.

KEY INFORMATION

MLS® R2645730

Residential Detached

West Central

4 Bedrooms

2 Bathrooms

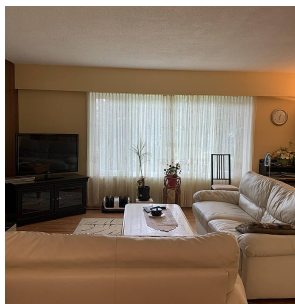
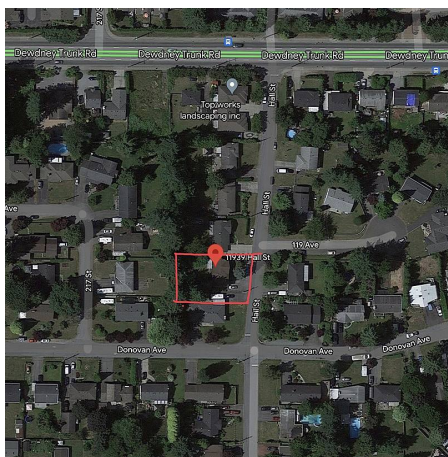
2,504 SF

9,760 SF Lot

FEATURES

Year Built: 1967

Listed By: Unilife Realty Inc.



rennie