

# 10307 155a Street, Surrey

\$1,799,000



**INVESTORS ALERT!! MULTIFAMILY REDEVELOPMENT & LAND ASSEMBLY POTENTIAL.** Currently Designated for 2 FAR & May Increase to 2.5 WITHIN GUILDFORD TOWN CENTRE PLAN. 4 Bedroom 2-Bathroom +DEN Detached Rancher Home on huge 8,853SF LOT near Guildford Town Centre Mall. Set on a QUIET KID-friendly cul-de-sac street 1 block from Guildford Heights Park. New Roof/Front Porch/Solarium w/Bathroom/Newer Hot Water Tank. See. Kids walk to Harold Bishop Elementary & Johnston Heights Sec. Schools. Easy stroll to Guildford Centre Mall(+200 shops)/Walmart/ London Drugs/Kins Farmer Market/Starbucks/T&T Supermarket/Cinemas/Save-On-Foods. Short drive to Superstore/Surrey Place Mall/Surrey Central Skytrain/SFU. Quick access to Hwy 1/Port Mann Bridge/Pattullo Bridge. Call for private Showing.

## KEY INFORMATION

MLS® R2645690

Residential Detached

Guildford

4 Bedrooms

2 Bathrooms

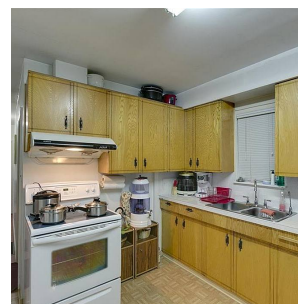
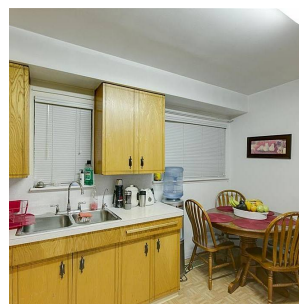
1,404 SF

8,853 SF Lot

## FEATURES

Year Built: 1959

Listed By: Sutton Group-Alliance R.E.S.



**rennie**