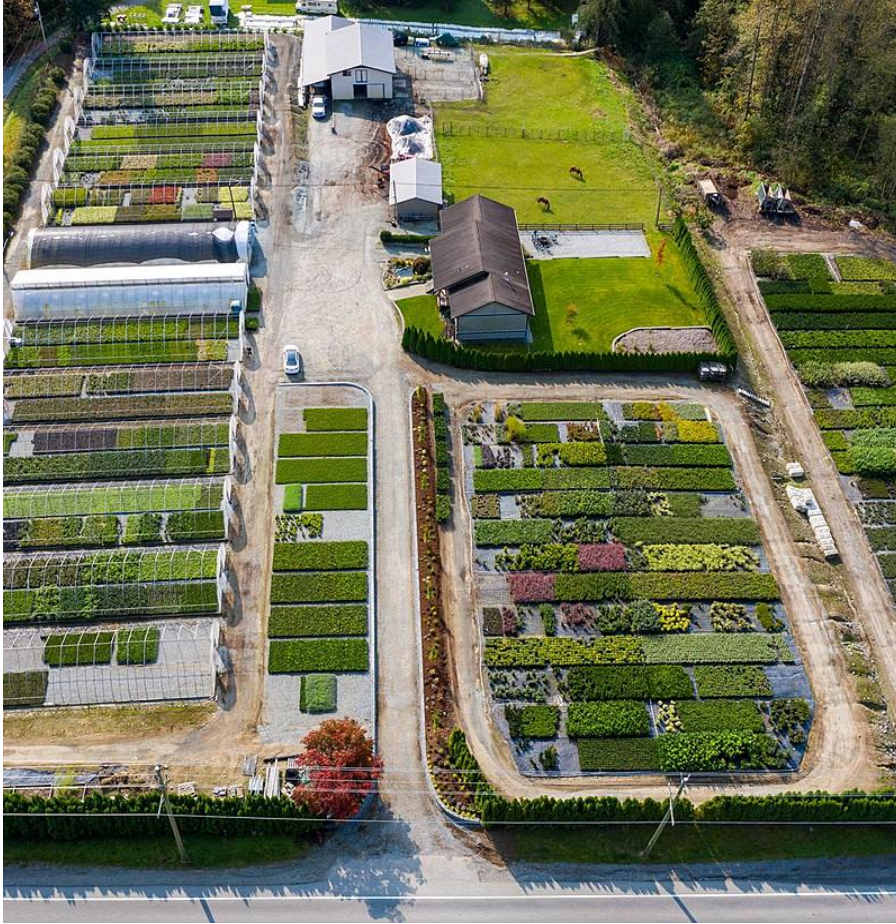


26362 Dewdney Trunk Road, Maple Ridge

\$3,999,000



SUPERB CUSTOM HOME, 3.57 ACRES, FULL NURSERY, 44x32 BARN, HORSES, CITY WATER! Once in a lifetime opportunity! Make money & build your life from home in this gorgeous 15yr young 4 bed/3 bath custom home w/great room, vaulted ceiling & open floor plan, big windows for maximum light w/access to MASSIVE southern exposed 26x12 covered patio w/2 gas outlets & view of the acreage. Basement fully fin w/sep entry can be easily transitioned to in-law accommodation. 200amp service, in floor heating, boiler + HVAC, 44x32 barn w/sep heat & water, 4 stalls/paddocks, hay room (400 bales) + workshop, big livable top floor, RV covered parking. This business makes excellent \$\$\$\$ w/14 greenhouses, tractors & equipment & inventory included. By realtor appt only DO NOT TRESPASS. VirtualTour shorturl.at/vzK34

KEY INFORMATION

MLS® R2646490

Residential Detached

Websters Corners

5 Bedrooms

4 Bathrooms

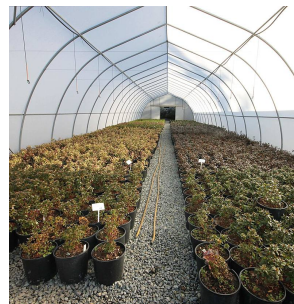
3,190 SF

155,509 SF Lot

FEATURES

Year Built: 2007

Listed By: Keller Williams Elite Realty



rennie