

610 711 Breslay Street, Coquitlam

\$1,085,000



Novella. 7 storey concrete building. North east corner unit. Rare 1513 s/f w/ 3 bdrm + 3 bath + 2 parkings + 2 lockers and air con installed. Bright & spacious living/dining rm. Features hi-end quality throughout. Top of the line appliances, quartz counters w/ 14 feet island and lots of kitchen cabinets. Wide plank laminate floors throughout. High ceilings and 2 covered private balcony. So close to shopping, park, school, bus stop and skytrain.

KEY INFORMATION

MLS® R2648068

Residential Attached

Coquitlam West

3 Bedrooms

3 Bathrooms

1,513 SF

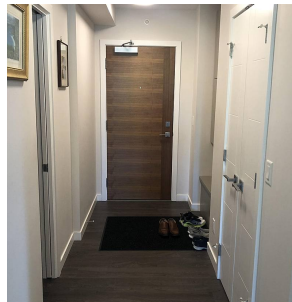
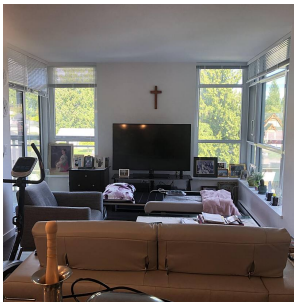
\$779.45 Maintenance Fees

FEATURES

Year Built: 2017

Views: PARTIAL MTN VIEW

Listed By: Royal Pacific Realty (Kingsway) Ltd.



rennie