

24 14555 68 Avenue, Surrey

\$899,000



Extremely rare corner, end unit 2 story townhome with extra windows. This spacious 3 bed, 3 bath townhome is ideally located near great schools with the best floor plan. Enjoy the luxurious kitchen with large bright windows. This unit has the best floorpan with high ceilings and plenty of windows, & is situated in the best location in the entire complex. with the largest yard. The master bedroom has a huge walk in closet with a private balcony. The kitchen has granite counter tops, stainless steel appliances, a breakfast bar and a powder wash on the main floor. Enjoy views of the mountains and city from the living room and upstairs bedroom, double side by side garage plus extra parking in front at the main entrance which is convenient, this unit will go fast. Act quickly.

KEY INFORMATION

MLS® R2648435

Residential Attached

East Newton

3 Bedrooms

3 Bathrooms

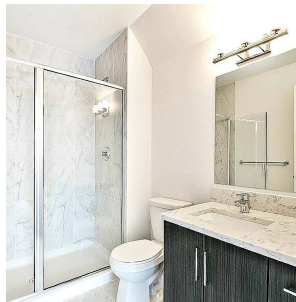
1,285 SF

FEATURES

Year Built: 2017

Views: CITY AND MOUNTAIN

Listed By: Team 3000 Realty Ltd.



rennie