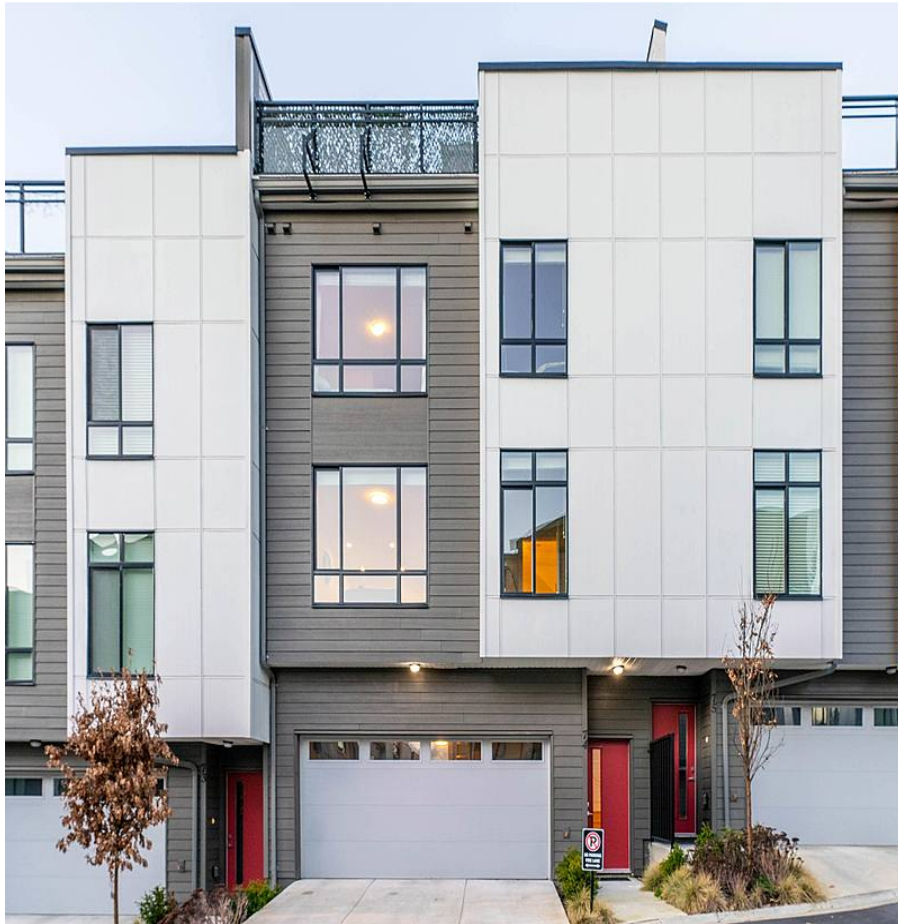


# 74 16433 19th Avenue, Surrey

\$859,800



WAO!!Welcome to Berkeley Village This Unique SOUTH FACING ROOFTOP PATIO w/ HOT TUB Capability & gas line for a barbecue comes with 04 CAR Parkings. Need to park a truck? YES You can, w/ the 10ft ceilings in the double side by side garage & room to park 02 more cars on the DRIVEWAY, ONLY THIS UNIT HAS IT! , located in S Surrey, offering 2 bdrms, 3 baths & a den! Main floor boasts a gleaming white kitchen w/ island to sit around & gather, S/S appliances w/ gas range & room for a large dining table for entertaining. The 2 pc powder rm & den/ flex space complete the main floor package! Up has 2 bedrms, 2 full bathrms, master w/ walk in closet & 3 pc ensuite w/glass shower. Blocks from Morgan Crossing w/ shops, restaurants, Steve Nash, Wal Mart, the list goes on. Whiterock Beach close by..

## KEY INFORMATION

MLS® R2647899

Residential Attached

Pacific Douglas

2 Bedrooms

3 Bathrooms

1,253 SF

## FEATURES

Year Built: 2020

Listed By: SRS Panorama Realty

74-16433 19 AVE  
SURREY BC

