

# 80 12711 64 Avenue, Surrey

\$799,233



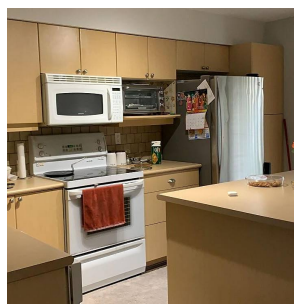
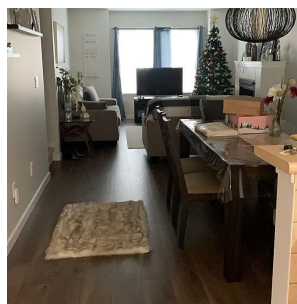
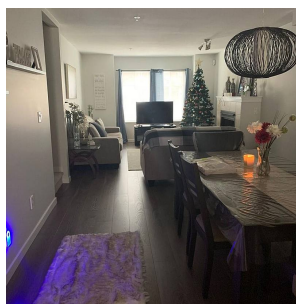
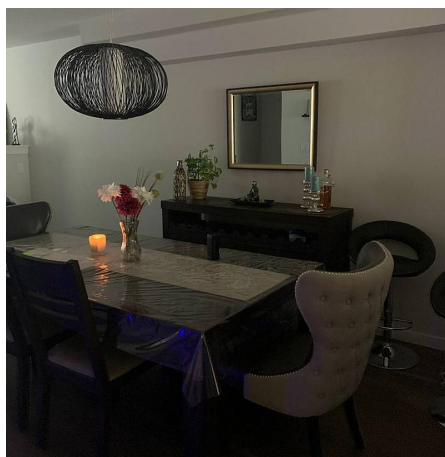
This bright, open-concept townhouse is located in the popular 'Palette on the Park' community of West Newton. Featuring 3 bedrooms, 2 bathrooms and a spacious layout spreading over 1500 square feet, this townhouse will not last long. Some notable features include a walk-out deck from the kitchen that leads to your private backyard, a double tandem garage, and tons of storage. Palette on the Park is located near a 20 acre park, several amenities, schools, shopping and transit. Kept very nice and updated. open house Sunday mar 13th 2 to 4 pm

## KEY INFORMATION

MLS® R2648783  
Residential Attached  
West Newton  
3 Bedrooms  
2 Bathrooms  
1,506 SF

## FEATURES

Year Built: 2005  
Listed By: Sutton Group-West Coast Realty (Surrey/120)



rennie