

112 18701 66 Avenue, Surrey

\$799,233



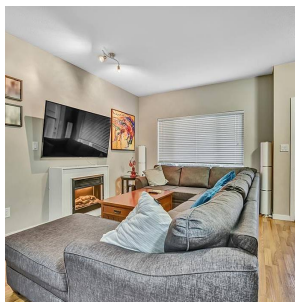
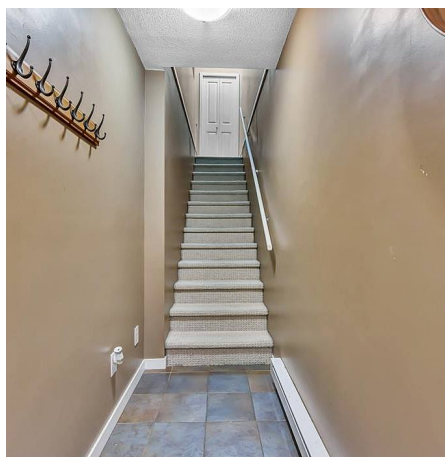
Encore at Hillcrest 3 bedroom, bath over 1449sf END unit with a good sized YARD getting western exposure. Just had fresh paint. This bright unit with extra side windows offers plenty of afternoon sunshine. Laminate floors on the main and tile flooring in the kitchen. Kitchen features granite counters and Stainless Steel appliances. Master bathroom with BRAND new double wide shower. Close to shopping, restaurants, banks, Doctor's, Dentists, both levels of schools...all within walking distance Open house Sunday March 13th 11-1 PM

KEY INFORMATION

MLS® R2648898
Residential Attached
Cloverdale
3 Bedrooms
2 Bathrooms
1,449 SF

FEATURES

Year Built: 2005
Views: Mountains
Listed By: Sutton Group-West Coast Realty (Surrey/120)



rennie