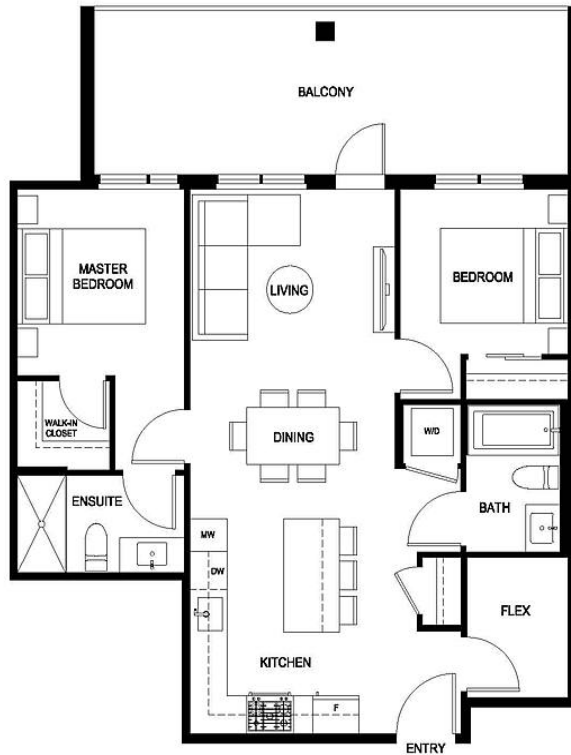


313 2450 Garden Drive, Vancouver

\$964,900

Interior: 816 Sq Ft / Outdoor: 217 Sq Ft
Total: 1,033 Sq Ft

Life Happens In Colour Here



Level 3-4

Grafia by Porte Homes is located on a quiet residential street just steps from Commercial Drive, transit and schools. The development will be a 6 story wood-frame building and amenities will include a lounge, gym, dog wash station, rooftop terrace, garden plots and more. Completion anticipated Fall 2024. This two bed and two baths plus a flex home is 816SF features a WIC in master bedroom, full size S/S appliance with gas stove. Laminate flooring through out and 217SF Balcony. Book an appt to own in our limited pre-construction release.

KEY INFORMATION

MLS® R2649275

Residential Attached

Grandview Woodland

2 Bedrooms

2 Bathrooms

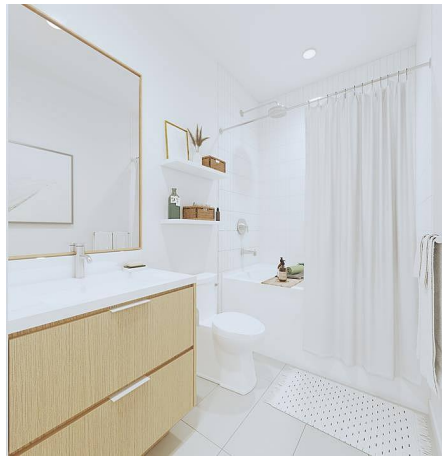
816 SF

\$376.04 Maintenance Fees

FEATURES

Year Built: 2024

Listed By: Porte Realty Ltd.



rennie