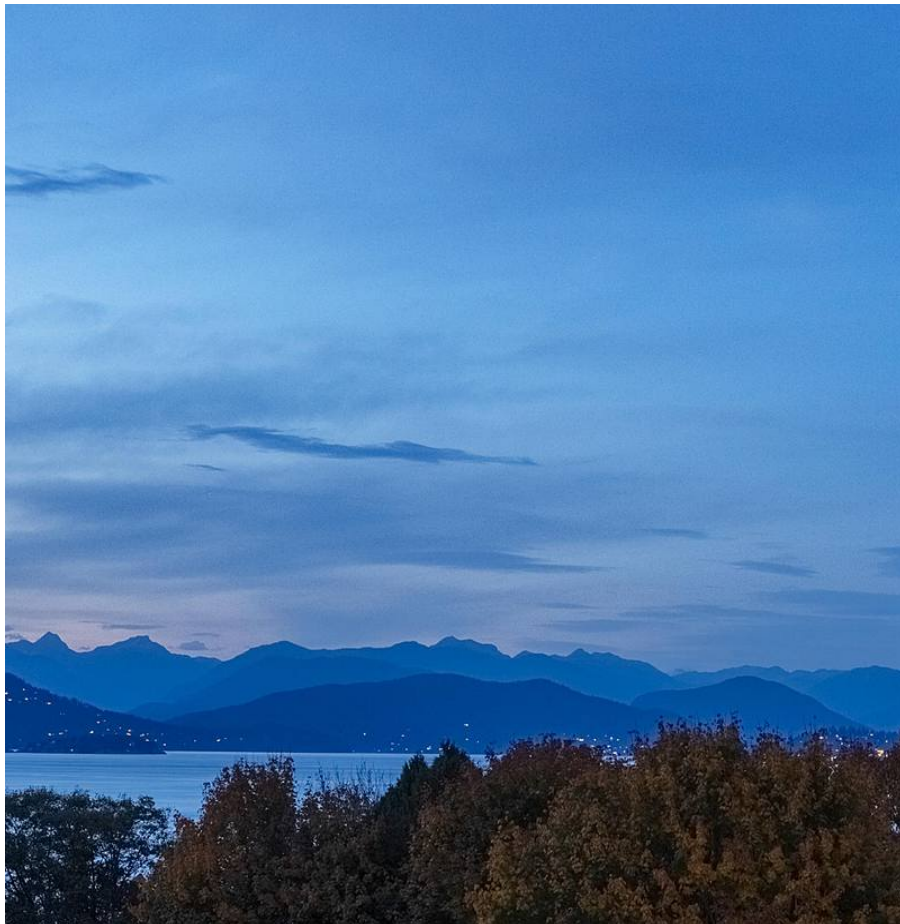


5550 Nw Marine Drive, Vancouver

\$18,880,000



This stunning English Tudor style estate is located in the most prestigious UBC neighbourhood. This world class residence sits on nearly 1 acre of beautifully manicured gardens & boasts spectacular ocean & mountain views from all levels. Offers grand luxurious living with over 6,700 SF across 3 expansive levels. Enter through the foyer to find the exquisite great room with fireplace, library/study and formal dining room. This elegant Tudor estate offers complete privacy while just minutes from Jericho Tennis Club, Royal Van Yacht Club & surrounded by some of the most expensive real estates in Vancouver.

KEY INFORMATION

MLS® R2649376

Residential Detached

University

5 Bedrooms

5 Bathrooms

6,740 SF

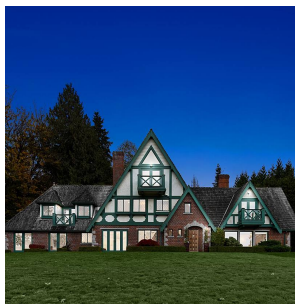
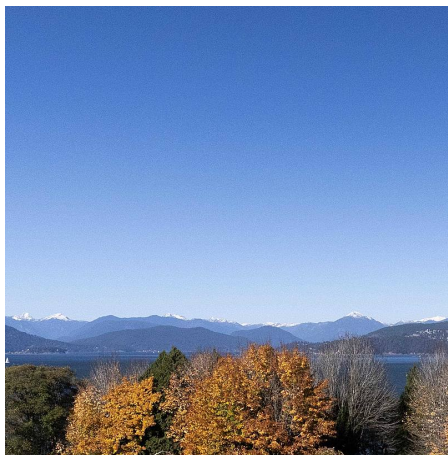
43,200 SF Lot

FEATURES

Year Built: 1953

Views: Water & Mountain

Listed By: Angell, Hasman & Associates Realty Ltd.



rennie