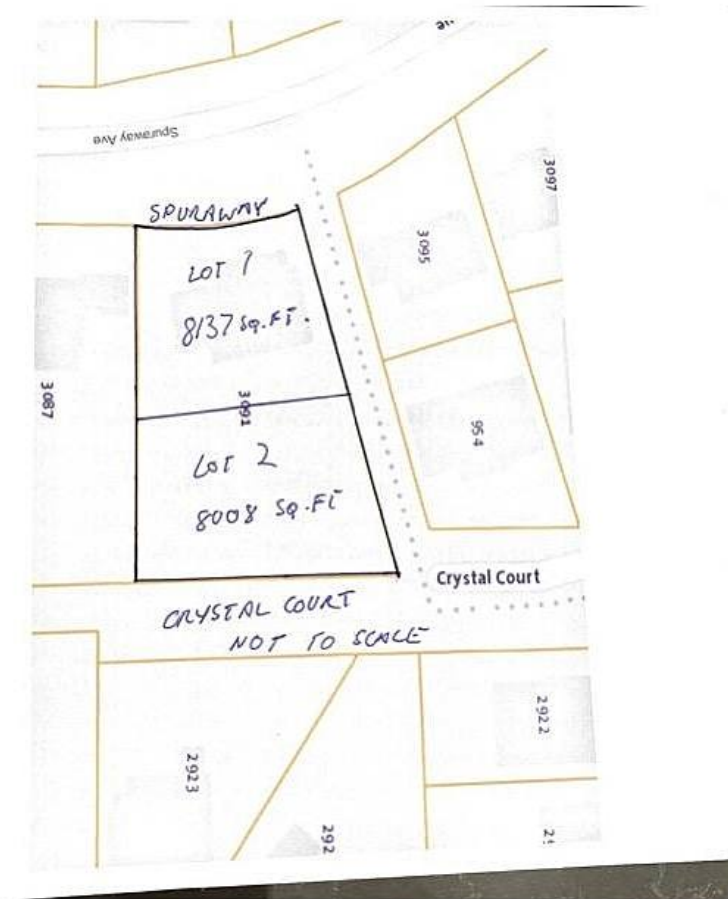


3091 Spuraway Avenue, Coquitlam

\$2,150,000



2 Lot Subdivision received preliminary layout approval in 2016. One lot will face Spuraway, the access for the lower lot is off Crystal Court. Total lot size is 16,156 (approx) Lot 1 8137 Sq.ft (approx) and Lot 2 8008 Sq.ft (approx) Views from both lots.

KEY INFORMATION

MLS® R2650143

Residential Detached

Ranch Park

3 Bedrooms

1 Bathroom

2,500 SF

16,000 SF Lot

FEATURES

Year Built: 1967

Listed By: Royal LePage West Real Estate Services

